

B90-160



Short description

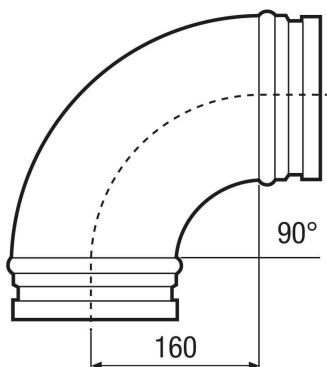
90° elbow, drawn, incl. lip seal, DN 160, for connecting folded spiral-seams ducts to the WS 300 Flat, WR 310/WR 410, WS 320 and WS 470 central ventilation units. Alternative to the SVR 160 plug connector

Article number 0055.0314

Technical data

Type of installation	Recessed-mounted
Material	Sheet steel
Weight	0,93 kg
Weight including packaging	0,93 kg
Nominal size	160 mm
Width	285 mm
Height	285 mm
Depth	285 mm
Width with packaging	285 mm
Height with packaging	285 mm
Depth with packaging	285 mm
Ambient temperature	60 °C
Packing unit	1 piece
Range	K
GTIN (EAN)	4012799553144

Dimensioned drawing [mm]



B90-160

