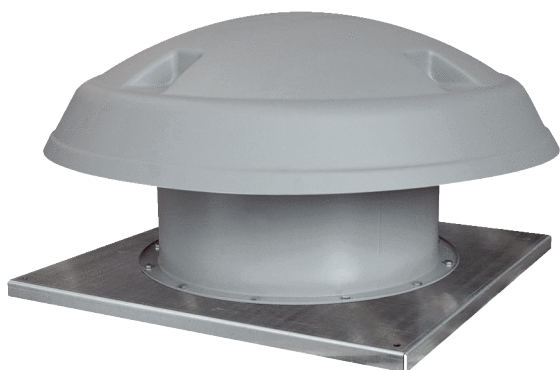


DAD 63/4



Short description

Axial roof fan, horizontal air outlet, 4-pin, DN 630, three-phase AC

Application examples

Production facility, Workplace, Commercial premises, Industrial building

Article number 0073.0074

Technical data

| | |
|---------------------------------|--|
| Air flow volume | 13.274 m ³ /h |
| Air volume _{nom} | 8.294 m ³ /h (in opt. efficiency) |
| Pressure p _{fs, nom} | 176 Pa (in opt. efficiency) |
| Rotating speed n _{nom} | 1.440 1/min (in opt. efficiency) |
| Rotating speed | 1.440 1/min |
| Impeller type | axial |
| Speed controllable | ✓ |
| Reversing capacity | – |
| Type of voltage | Three-phase AC |
| Rated voltage | 400 V |
| Frequency | 50 Hz |
| Nominal output | 1.100 W (in opt. efficiency) |
| I _{nom} | 2,5 A (in opt. efficiency) |
| Degree of protection | IP 55 |
| Insulation class | F |
| Pole-changeable | – |
| Installation site | Roof |
| Installation position | Vertical |
| Housing material | Sheet steel, galvanised |
| Impeller material | Polyamide |
| Colour | grey |
| Weight | 59 kg |
| Weight including packaging | 65 kg |
| Nominal size | 630 mm |
| Width | 1.100 mm |
| Height | 565 mm |
| Depth | 1.100 mm |
| Width with packaging | 1.200 mm |
| Height with packaging | 800 mm |

DAD 63/4

| | |
|------------------------------------|--------------------|
| Depth with packaging | 1.200 mm |
| Airstream temperature at I_{Max} | -15 °C up to 50 °C |
| PTC DIN 44082 | M 100 |
| Packing unit | 1 piece |
| Range | C |
| GTIN (EAN) | 4012799730743 |

Technical data according to ErP in Best Efficiency Point (BEP)

| | |
|--|---|
| Total efficiency η | 44,46 % |
| Measurement category | C |
| Efficiency category | static |
| Efficiency level N | 50,5 |
| VSD necessary | No |
| Year of manufacture | see rating plate |
| Manufacturer's name / official registration number / manufacturer's place of establishment | Maico Elektroapparate-Fabrik GmbH / Freiburg registration court, HRB 601233 / see mounting instructions |
| Art. No. | 0073.0074 |
| P_{BEP} / Air volume $_{BEP}$ / $P_{fs, BEP}$ | 1,093 kW / 8.294 m ³ /h |
| n_{BEP} | 1.430 1/min |
| Specific ratio | ≈ 1 |
| Information about dismantling and disposal | see mounting instructions |
| Information about installation, operation and repairs | see mounting instructions |
| Objects used to measure efficiency which are not described by the measurement category | - |
| I_{BEP} | 2,5 A |
| $P_{f, BEP}$ | 176 Pa |
| Sound power level $_{L_{WA7}}$ | 82 dB(A) |

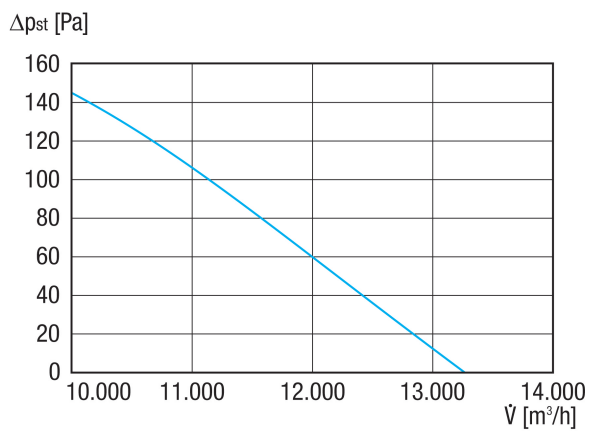
Sound power level in octave range

| | 63 Hz | 125 Hz | 250 Hz | 500 Hz | 1 kHz | 2 kHz | 4 kHz | 8 kHz | Total |
|---|-------|--------|--------|--------|-------|-------|-------|-------|-------|
| $L_{WA5, S5}$ (dB(A)) | 57 | 64 | 69 | 74 | 77 | 76 | 75 | 69 | 82 |

L_{WA5} = free inlet sound power level in dB.

DAD 63/4

Characteristic curve



Dimensioned drawing [mm]

