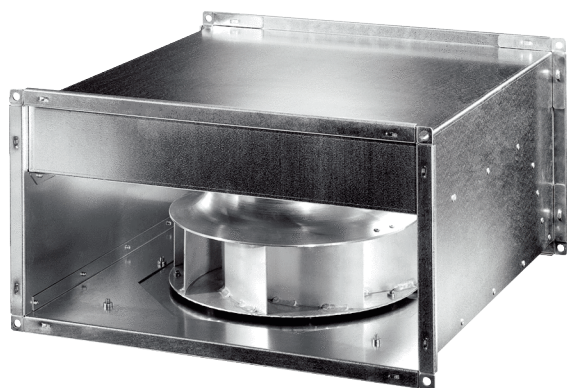


DPK 22 EC



Short description

Centrifugal duct fan, with EC motor, alternating current, channel size 500 mm x 250 mm

Application examples

Commercial premises, Workplace, Showroom, Production facility, Industrial building

Article number 0086.0800

Technical data

Air flow volume	2.000 m ³ /h
Air volume _{nom}	1.100 m ³ /h (in opt. efficiency)
Pressure p _{fs, nom}	313 Pa (in opt. efficiency)
Rotating speed n _{nom}	1.650 1/min (in opt. efficiency)
Rotating speed	1.650 1/min
Speed controllable	✓
Rated voltage	230 V
Frequency	50 Hz/60 Hz
Nominal output	198 W
I _{nom}	0,96 A
Degree of protection	IP 54
Insulation class	F
Installation site	Channel
Installation position	any
Housing material	Sheet steel, galvanised
Weight	20,12 kg
Weight including packaging	21,9 kg
Swivelling fan	✓
Channel dimension	500 mm x 250 mm
Width	540 mm
Height	290 mm
Depth	530 mm
Width with packaging	545 mm
Height with packaging	360 mm
Depth with packaging	560 mm
Airstream temperature	-20 °C up to 50 °C
Packing unit	1 piece
Range	E
GTIN (EAN)	4012799868002

DPK 22 EC

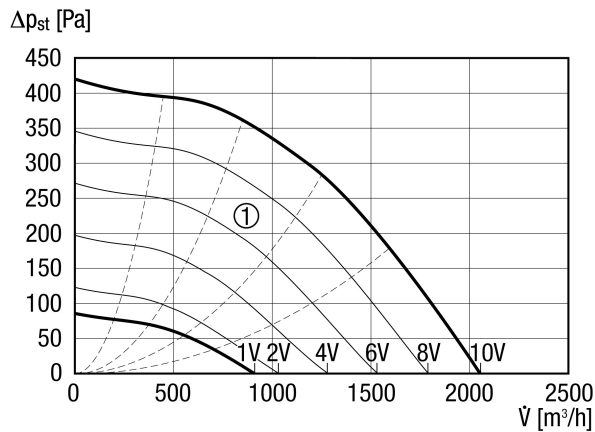
Sound power level in octave range

	63 Hz	125 Hz	250 Hz	500 Hz	1 kHz	2 kHz	4 kHz	8 kHz	Total
L_{WA2}, S5 (dB(A))	–	55	57	49	48	46	41	33	60
L_{WA5}, S5 (dB(A))	–	61	62	63	63	60	53	41	69
L_{WA6}, S5 (dB(A))	–	58	66	68	68	67	59	52	73

L_{WA2}= housing sound power level in dB.
 L_{WA5}= free inlet sound power level in dB.
 L_{WA6}= free outlet sound power level in dB.

Characteristic curve

Auxiliary characteristics curves for control voltage 1 - 10 V



DPK 22 EC

Dimensioned drawing [mm]

