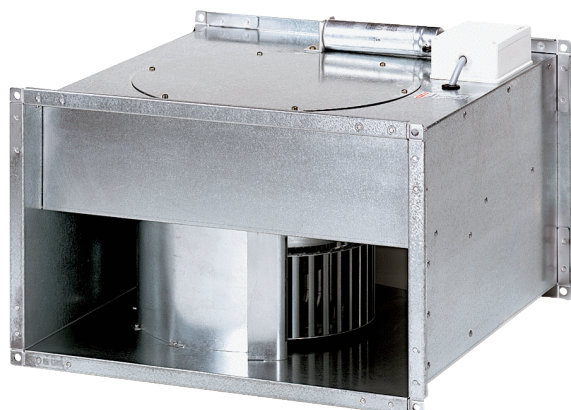


# DPK 28/4 B



## Short description

Centrifugal channel fan, three-phase AC

Article number 0086.0665

## Technical data

Air flow volume	3.900 m <sup>3</sup> /h (Required Delta p <sub>fs</sub> min = 200 Pa)
Air volume <sub>nom</sub>	1.495 m <sup>3</sup> /h (in opt. efficiency)
Pressure p <sub>fs, nom</sub>	590 Pa (in opt. efficiency)
Rotating speed n <sub>nom</sub>	1.445 1/min (in opt. efficiency)
Rotating speed	1.480 1/min
Speed controllable	✓
Type of voltage	Three-phase AC
Rated voltage	400 V
Nominal output	590 W (in opt. efficiency)
I <sub>nom</sub>	1,7 A
I <sub>max</sub>	3,2 A (in opt. efficiency)
Degree of protection	IP 55
Insulation class	F
Mains cable	5 x 1,5 mm <sup>2</sup>
Installation position	vertical / horizontal
Weight	29,3 kg
Weight including packaging	31,76 kg
Channel dimension	600 mm x 300 mm
Width	640 mm
Height	340 mm
Depth	680 mm
Width with packaging	700 mm
Height with packaging	420 mm
Depth with packaging	670 mm
Airstream temperature at nominal current	-20 °C up to 60 °C
Airstream temperature at I <sub>Max</sub>	-20 °C up to 60 °C
Packing unit	1 piece
Range	D
GTIN (EAN)	4012799866657

# DPK 28/4 B

Technical data according to ErP in Best Efficiency Point (BEP)

Total efficiency $\eta$	41,5 %
Measurement category	D
Efficiency category	total
Efficiency level N	49,2
VSD necessary	No
Year of manufacture	see rating plate
Manufacturer's name / official registration number / manufacturer's place of establishment	Maico Elektroapparate-Fabrik GmbH / Freiburg registration court, HRB 601233 / Villingen-Schwenningen
Art. No.	0086.0665
$P_{BEP}$ / Air volume $_{BEP}$ / $P_{fs, BEP}$	0,596 kW / 1.495 m <sup>3</sup> /h
$n_{BEP}$	1.445 1/min
Specific ratio	$\approx 1$
Information about dismantling and disposal	see mounting instructions
Information about installation, operation and repairs	see mounting instructions
Objects used to measure efficiency which are not described by the measurement category	-
$P_f, BEP$	595 Pa

Sound power level in octave range

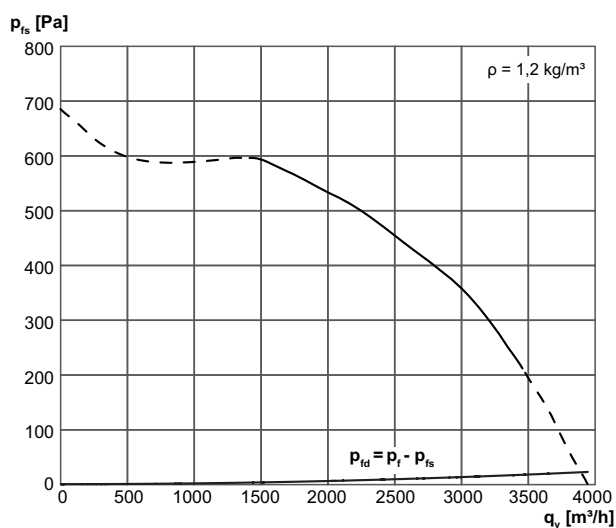
	63 Hz	125 Hz	250 Hz	500 Hz	1 kHz	2 kHz	4 kHz	8 kHz	Total
<b>L<sub>WA2, S1</sub></b> <b>(dB(A))</b>	31	39	43	44	39	35	26	7	48
<b>L<sub>WA2, S2</sub></b> <b>(dB(A))</b>	39	46	54	55	48	45	41	25	59
<b>L<sub>WA2, S3</sub></b> <b>(dB(A))</b>	45	54	60	63	56	52	48	36	66
<b>L<sub>WA2, S4</sub></b> <b>(dB(A))</b>	50	60	66	72	65	63	58	50	74
<b>L<sub>WA2, S5</sub></b> <b>(dB(A))</b>	57	67	70	73	70	68	63	56	77
<b>L<sub>WA5, S1</sub></b> <b>(dB(A))</b>	30	45	46	48	48	48	40	25	54
<b>L<sub>WA5, S2</sub></b> <b>(dB(A))</b>	38	52	57	60	57	58	55	42	65
<b>L<sub>WA5, S3</sub></b> <b>(dB(A))</b>	45	61	64	69	66	67	65	56	74
<b>L<sub>WA5, S4</sub></b> <b>(dB(A))</b>	51	68	70	77	74	74	72	65	81
<b>L<sub>WA5, S5</sub></b> <b>(dB(A))</b>	56	73	73	80	80	81	78	73	87

# DPK 28/4 B

	63 Hz	125 Hz	250 Hz	500 Hz	1 kHz	2 kHz	4 kHz	8 kHz	Total
<b>L<sub>WA6, S1</sub></b> <b>(dB(A))</b>	28	42	46	54	53	51	46	30	58
<b>L<sub>WA6, S2</sub></b> <b>(dB(A))</b>	37	50	57	65	63	62	61	53	69
<b>L<sub>WA6, S3</sub></b> <b>(dB(A))</b>	44	57	63	72	71	70	71	66	78
<b>L<sub>WA6, S4</sub></b> <b>(dB(A))</b>	51	65	70	80	79	78	78	74	85
<b>L<sub>WA6, S5</sub></b> <b>(dB(A))</b>	59	73	77	83	88	87	86	82	93

L<sub>WA2</sub>= housing sound power level in dB.  
 L<sub>WA5</sub>= free inlet sound power level in dB.  
 L<sub>WA6</sub>= free outlet sound power level in dB.

## Characteristic curve



# DPK 28/4 B

Dimensioned drawing [mm]

