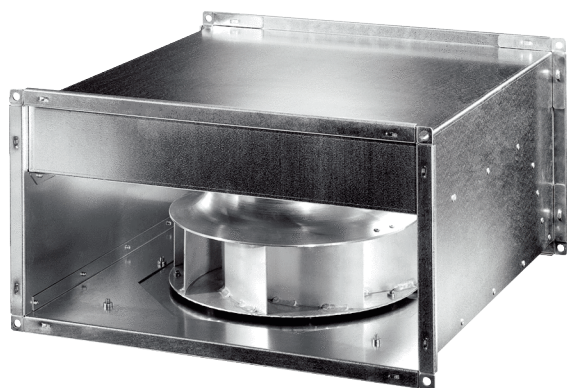


DPK 31 EC



Short description

Centrifugal duct fan, with EC motor, alternating current, channel size 600 mm x 350 mm

Application examples

Commercial premises, Workplace, Showroom, Production facility, Industrial building

Article number 0086.0802

Technical data

Air flow volume	3.500 m ³ /h
Air volume _{nom}	2.100 m ³ /h (in opt. efficiency)
Pressure p _{fs, nom}	328 Pa (in opt. efficiency)
Rotating speed n _{nom}	1.500 1/min (in opt. efficiency)
Rotating speed	1.500 1/min
Speed controllable	✓
Rated voltage	230 V
Frequency	50 Hz/60 Hz
Nominal output	349 W
I _{nom}	1,6 A
Degree of protection	IP 54
Insulation class	F
Installation site	Channel
Installation position	any
Housing material	Sheet steel, galvanised
Weight	31,84 kg
Weight including packaging	34,52 kg
Swivelling fan	✓
Channel dimension	600 mm x 350 mm
Width	640 mm
Height	390 mm
Depth	700 mm
Width with packaging	665 mm
Height with packaging	470 mm
Depth with packaging	725 mm
Airstream temperature	-20 °C up to 50 °C
Packing unit	1 piece
Range	E
GTIN (EAN)	4012799868026

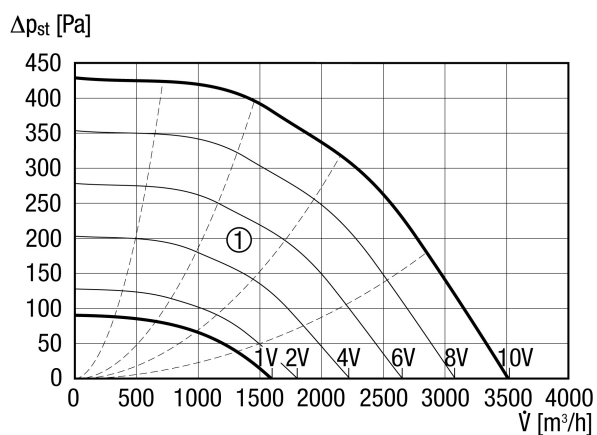
DPK 31 EC

Sound power level in octave range

	63 Hz	125 Hz	250 Hz	500 Hz	1 kHz	2 kHz	4 kHz	8 kHz	Total
L_{WA2}, S5 (dB(A))	–	59	58	51	51	48	42	36	63
L_{WA5}, S5 (dB(A))	–	61	67	63	63	65	61	52	72
L_{WA6}, S5 (dB(A))	–	66	67	70	71	70	63	54	76

L_{WA2}= housing sound power level in dB.
 L_{WA5}= free inlet sound power level in dB.
 L_{WA6}= free outlet sound power level in dB.

Characteristic curve



Auxiliary characteristics curves for control voltage 1 - 10 V

DPK 31 EC

Dimensioned drawing [mm]

