

DRH 16-5 R



Short description

Electric air heater with integrated temperature controller, DN 160, three-phase AC

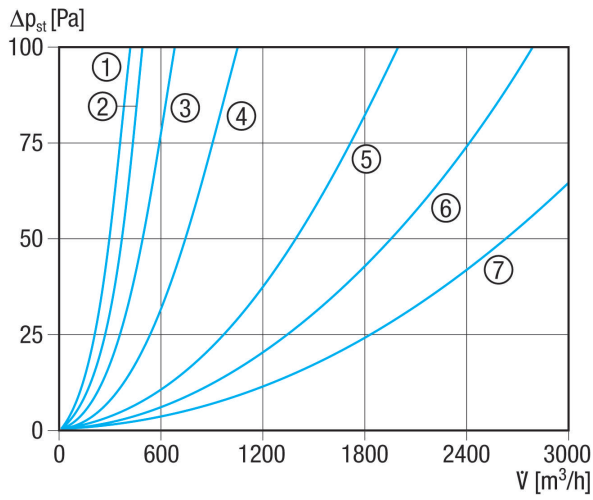
Article number 0082.0143

Technical data

| | |
|----------------------------|-------------------------|
| Minimum air flow volume | 110 m³/h |
| Type of voltage | Three-phase AC |
| Rated voltage | 400 V |
| Frequency | 50 Hz |
| I _{max} | 12,5 A |
| Degree of protection | IP 43 |
| Mains cable | 5 x 1,5 mm² |
| Installation | inside and outside |
| Installation position | horizontal / vertical |
| Housing material | Sheet steel, galvanised |
| Weight | 4,28 kg |
| Weight including packaging | 4,68 kg |
| Nominal size | 160 mm |
| Width | 160 mm |
| Height | 241 mm |
| Depth | 375 mm |
| Width with packaging | 235 mm |
| Height with packaging | 305 mm |
| Depth with packaging | 380 mm |
| Air heater type | electrical |
| Heater power rating | 5.000 W |
| Packing unit | 1 piece |
| Range | C |
| GTIN (EAN) | 4012799821434 |

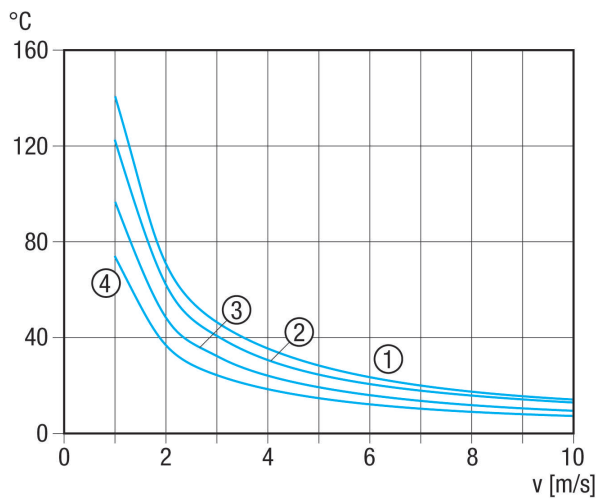
DRH 16-5 R

Characteristic curve Pressure losses



- ① ERH 16-2 R
- ② DRH 16-5 R
- ③ DRH 20-6 R
- ④ DRH 25-9 R
- ⑤ DRH 31-12 R
- ⑥ DRH 35-12 R
- ⑦ DRH 40-12 R

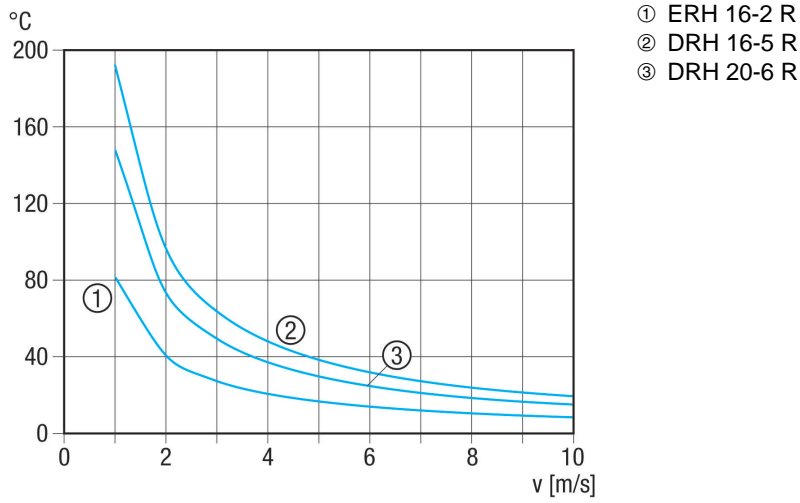
Characteristic curve Temperature increase DN 250 to 400



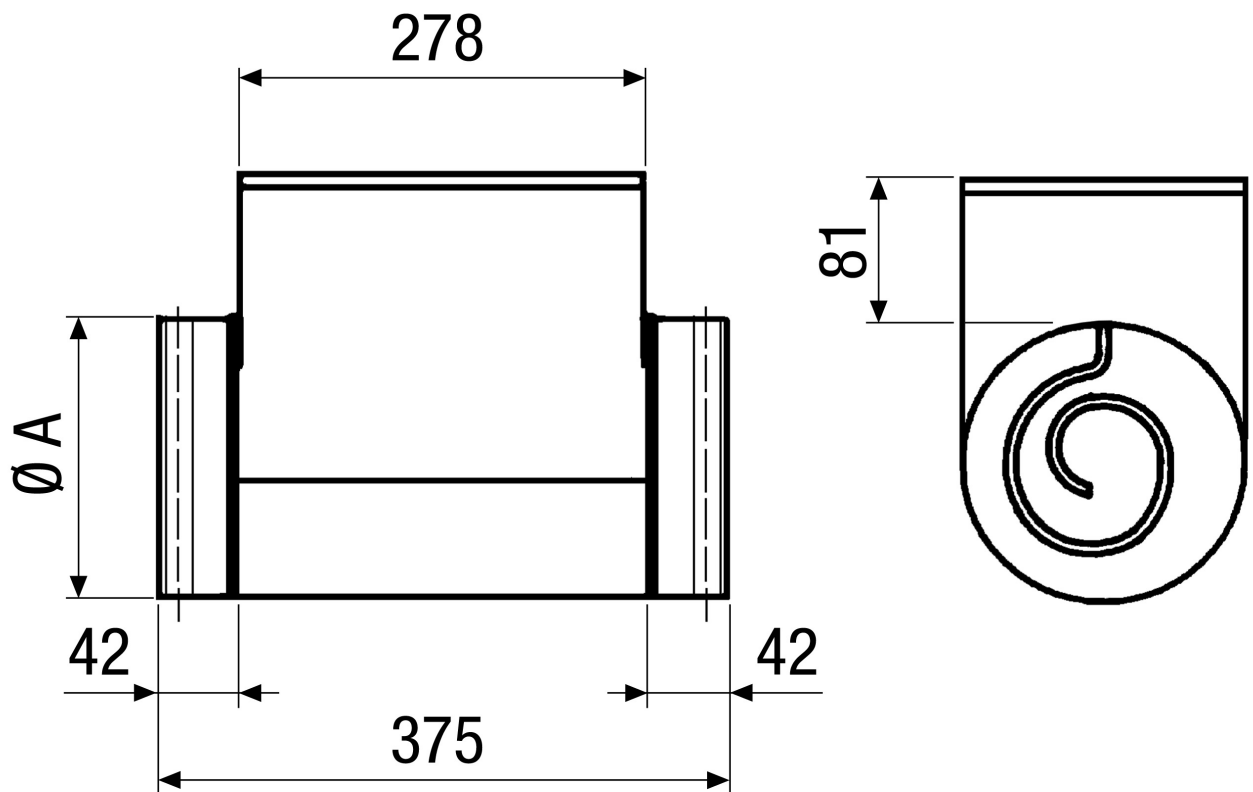
- ① DRH 25-9 R
- ② DRH 31-12 R
- ③ DRH 35-12 R
- ④ DRH 40-12 R

DRH 16-5 R

Characteristic curve Temperature increase DN 160 to 200



Dimensioned drawing [mm]



A
160



DRH 16-5 R

DRH 35-12 R: No rubber seal on the connection couplings