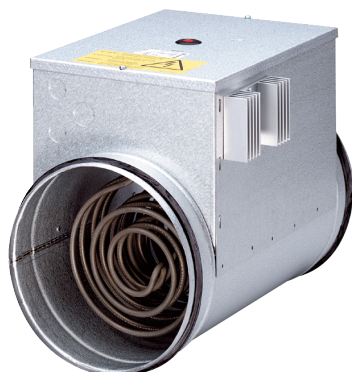


# DRH 35-12 R



## Short description

Electric air heater with integrated temperature controller, DN 350, three-phase AC

Article number 0082.0147

## Technical data

Minimum air flow volume	520 m <sup>3</sup> /h
Type of voltage	Three-phase AC
Rated voltage	400 V
Frequency	50 Hz
I <sub>max</sub>	10 A
Degree of protection	IP 43
Installation	inside and outside
Installation position	horizontal / vertical
Housing material	Sheet steel, galvanised
Weight	8,72 kg
Weight including packaging	9,8 kg
Nominal size	350 mm
Width	350 mm
Height	431 mm
Depth	375 mm
Width with packaging	465 mm
Height with packaging	545 mm
Depth with packaging	390 mm
Air heater type	electrical
Heater power rating	12.000 W
Packing unit	1 piece
Range	C
GTIN (EAN)	4012799821472

# DRH 35-12 R

## Characteristic curve Pressure losses



- ① ERH 16-2 R
- ② DRH 16-5 R
- ③ DRH 20-6 R
- ④ DRH 25-9 R
- ⑤ DRH 31-12 R
- ⑥ DRH 35-12 R
- ⑦ DRH 40-12 R

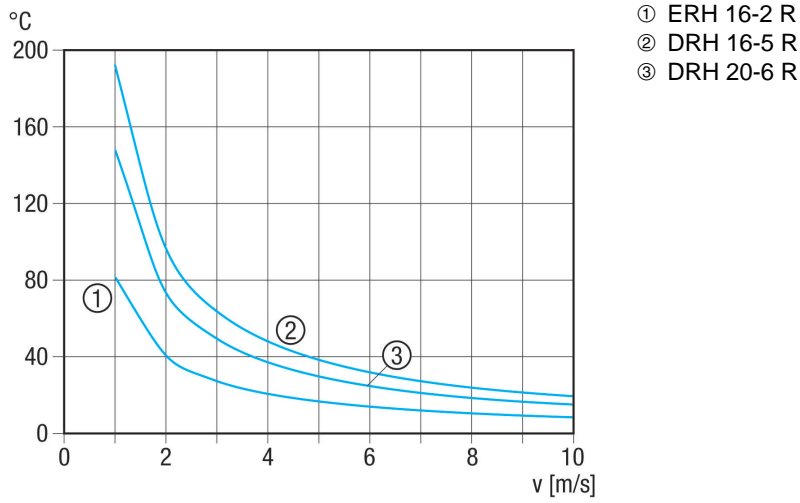
## Characteristic curve Temperature increase DN 250 to 400



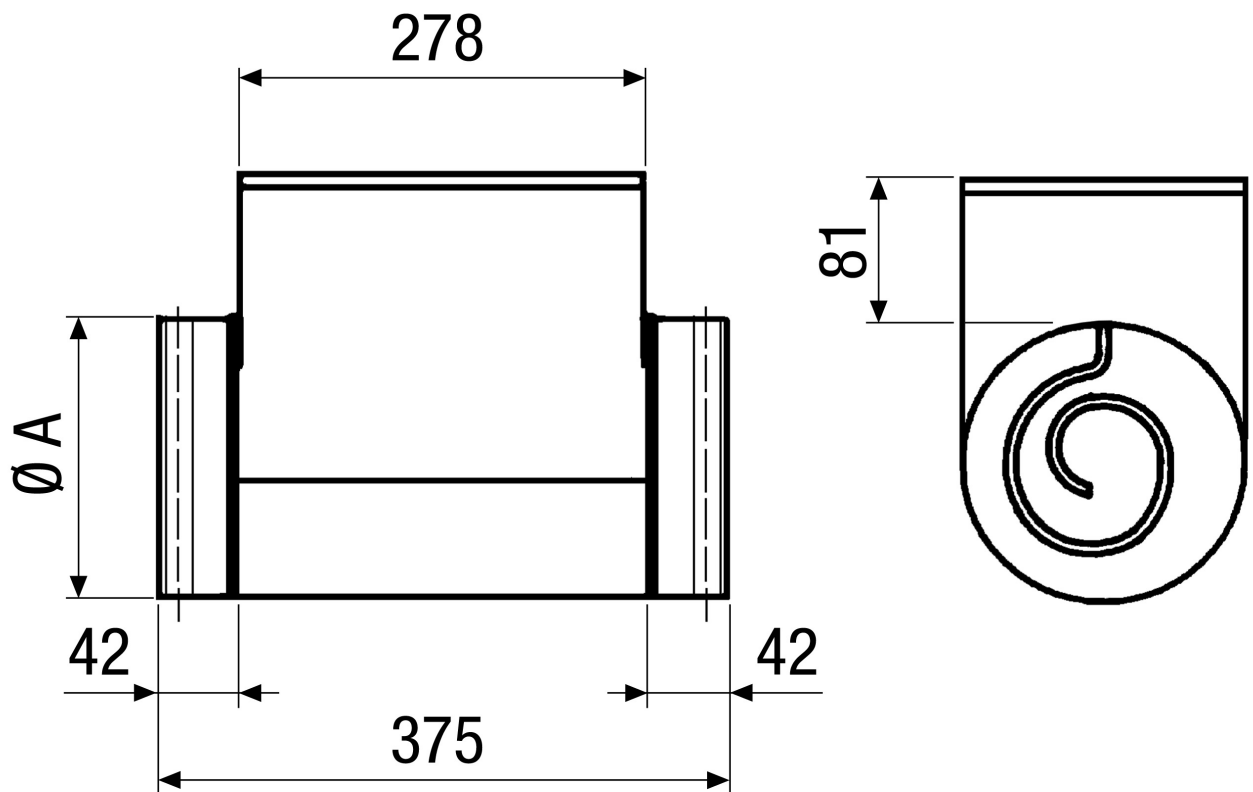
- ① DRH 25-9 R
- ② DRH 31-12 R
- ③ DRH 35-12 R
- ④ DRH 40-12 R

# DRH 35-12 R

Characteristic curve Temperature increase DN 160 to 200



Dimensioned drawing [mm]



A  
350



# DRH 35-12 R

DRH 35-12 R: No rubber seal on the connection couplings