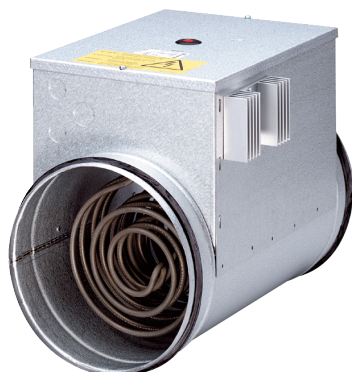


# DRH 40-12 R



## Short description

Electric air heater with integrated temperature controller, DN 400, three-phase AC

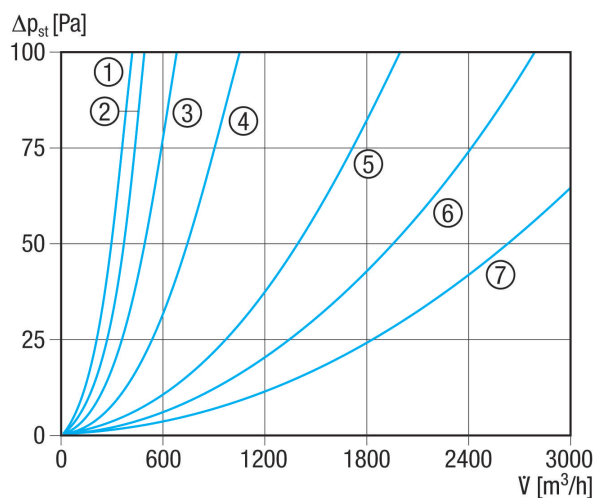
Article number 0082.0148

## Technical data

Minimum air flow volume	680 m <sup>3</sup> /h
Type of voltage	Three-phase AC
Rated voltage	400 V
Frequency	50 Hz
I <sub>max</sub>	10 A
Degree of protection	IP 43
Installation	inside and outside
Installation position	horizontal / vertical
Housing material	Sheet steel, galvanised
Weight	9,18 kg
Weight including packaging	10,22 kg
Nominal size	400 mm
Width	400 mm
Height	481 mm
Depth	375 mm
Width with packaging	470 mm
Height with packaging	540 mm
Depth with packaging	385 mm
Air heater type	electrical
Heater power rating	12.000 W
Packing unit	1 piece
Range	C
GTIN (EAN)	4012799821489

# DRH 40-12 R

## Characteristic curve Pressure losses



- ① ERH 16-2 R
- ② DRH 16-5 R
- ③ DRH 20-6 R
- ④ DRH 25-9 R
- ⑤ DRH 31-12 R
- ⑥ DRH 35-12 R
- ⑦ DRH 40-12 R

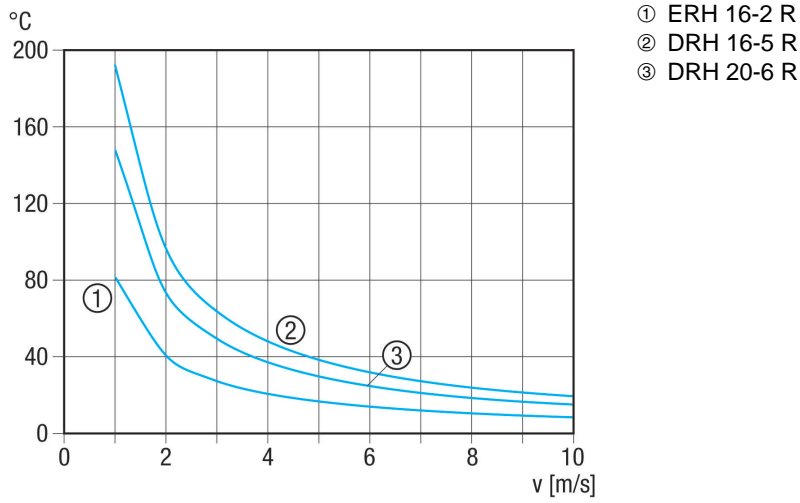
## Characteristic curve Temperature increase DN 250 to 400



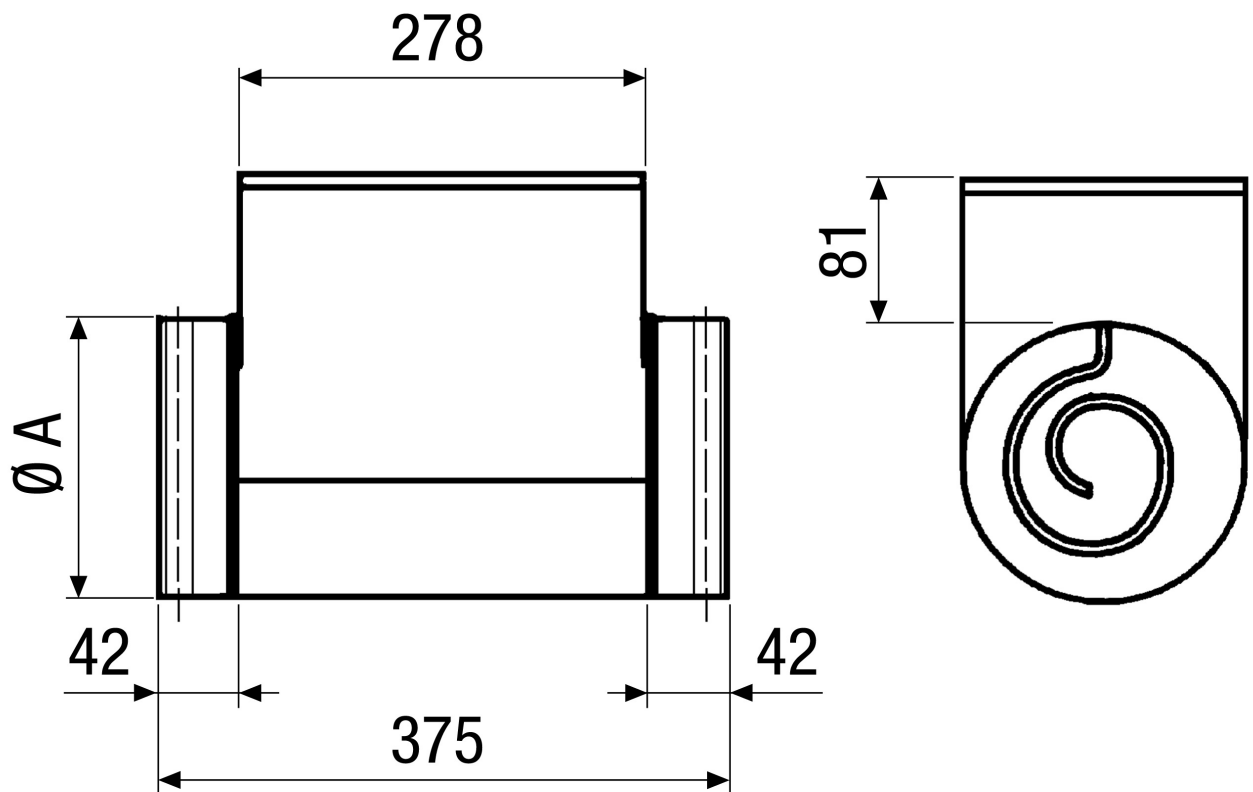
- ① DRH 25-9 R
- ② DRH 31-12 R
- ③ DRH 35-12 R
- ④ DRH 40-12 R

# DRH 40-12 R

## Characteristic curve Temperature increase DN 160 to 200



## Dimensioned drawing [mm]



A  
400



# DRH 40-12 R

DRH 35-12 R: No rubber seal on the connection couplings