

DZQ 60/6 B Ex t



Short description

Axial wall-mounted fan with square wall plate, DN600, three-phase AC, explosion-proof, medium: dust

Article number 0083.0216

Technical data

Model	Square wall plate
Air flow volume	9.450 m ³ /h
Rotating speed	960 1/min
Speed controllable	✓
Reversing capacity	✓
Type of voltage	Three-phase AC
Rated voltage	400 V
Frequency	50 Hz
Nominal output	295 W
cosφ	0,65
I _{nom}	0,66 A
I _{max} at U _{Nominal}	1,32 A
Degree of protection	IP 64
Insulation class	F
Type of installation	Surface-mounted
Material	Sheet steel, galvanised
Colour	galvanised
Weight	27,3 kg
Weight including packaging	33,02 kg
Nominal size	600 mm
Width	820 mm
Height	820 mm
Depth	317,5 mm
Width with packaging	845 mm
Height with packaging	845 mm
Depth with packaging	430 mm
EX designation in accordance with the ATEX Directive	Ex II 2 D
EX designation in accordance with standard	Ex tb IIIC T200°C Db IP64 X / Ex h IIIC T200°C Db X
Ta ambient temperature	-40 °C ≤ Ta ≤ +60 °C

DZQ 60/6 B Ex t

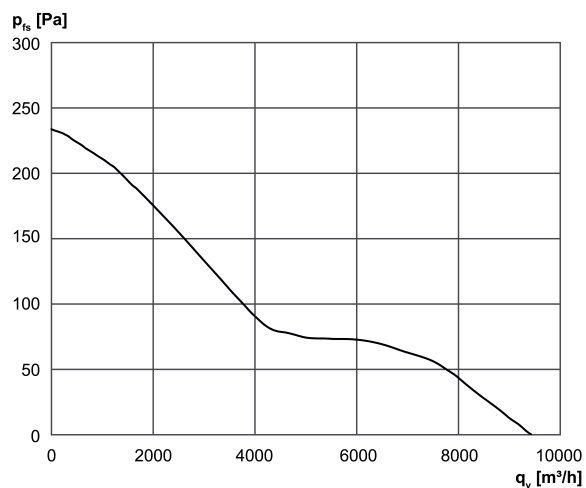
I _A /I _N	4,5
Time t _A	290 sek
Operating mode	S1
PTC DIN 44082	M 130
EC type examination certificate	TÜV-A 19 ATEX0102 X, IECEx EPS 19.0018X
Temperature class	T200°C
Temperature class of insulating materials Th. Cl.	155 (F)
Packing unit	1 piece
Range	G
GTIN (EAN)	4012799832164

Sound power level in octave range

	63 Hz	125 Hz	250 Hz	500 Hz	1 kHz	2 kHz	4 kHz	8 kHz	Total
L _{WA7, high} (dB(A))	-	-	-	-	-	-	-	-	78

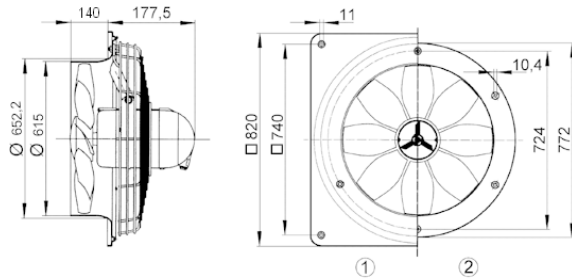
L_{WA7}= housing and free inlet sound power level in dB.

Characteristic curve



DZQ 60/6 B Ex t

Dimensioned drawing [mm]



① Steel wall plate = EZQ/DZQ version

② Steel wall ring = EZS/DZS version

The air flow direction is marked.

Standard exhaust air mode, air flow direction with air drawn across motor.