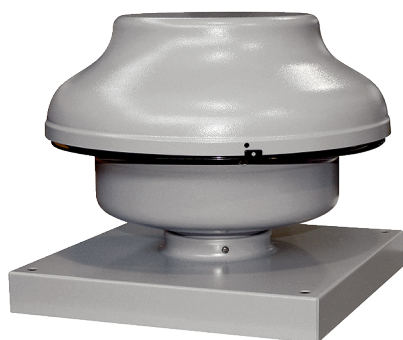


EHD 10/2 EC



Short description

Mini roof fan for private or commercial use, DN 100, air volume 392 m³/h, motor with EC technology

Application examples

Greenhouse, Garage, Building container, Foreman's office

Article number 0073.0589

Technical data

Air flow volume	392 m³/h
Rotating speed	3.395 1/min
Impeller type	radial
Speed controllable	✓
Reversing capacity	–
Type of voltage	Alternating current
Rated voltage	230 V
Frequency	50 Hz/60 Hz
Nominal output	121 W
I _{max}	0,7 A
Degree of protection	IP X5
Insulation class	F
Pole-changeable	–
Mains cable	3 x 1,5 mm²
Installation site	Roof
Installation position	vertical
Material	Sheet steel, galvanised
Colour	Silver
Weight	4,8 kg
Weight including packaging	5,4 kg
Nominal size	100 mm
Width	333 mm
Height	261 mm
Depth	333 mm
Width with packaging	385 mm
Height with packaging	300 mm
Depth with packaging	385 mm
Airstream temperature at I _{Max}	-20 °C up to 60 °C
Sound pressure level	56 dB(A) (Distance 3 m, Free-field conditions)

EHD 10/2 EC

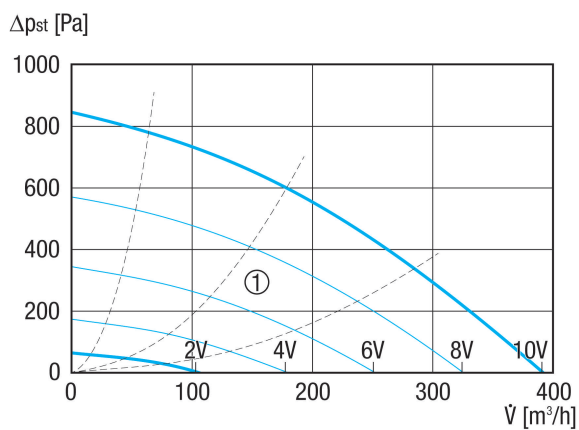
Packing unit	1 piece
Range	E
GTIN (EAN)	4012799735892

Sound power level in octave range

	63 Hz	125 Hz	250 Hz	500 Hz	1 kHz	2 kHz	4 kHz	8 kHz	Total
L_{WA5, S2} (dB(A))	–	25	31	37	32	33	0	0	45
L_{WA5, S4} (dB(A))	–	34	45	52	46	49	39	19	59
L_{WA5, S6} (dB(A))	–	40	53	61	55	60	51	39	68
L_{WA5, S8} (dB(A))	–	44	58	68	63	67	59	48	76
L_{WA5, S10} (dB(A))	–	48	61	74	68	73	65	54	81

L_{WA5}= free inlet sound power level in dB.

Characteristic curve



① Auxiliary characteristics curves for control voltage 2 - 10 V

EHD 10/2 EC

Dimensioned drawing [mm]

