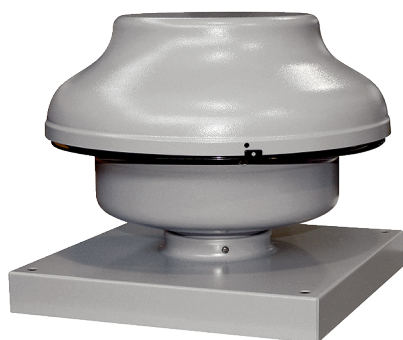


# EHD 10 EC



## Short description

Mini roof fan for private or commercial use, DN 100, air volume 395 m<sup>3</sup>/h, motor with EC technology

## Application examples

Greenhouse, Garage, Building container, Foreman's office

Article number 0073.0559

## Technical data

Air flow volume	395 m <sup>3</sup> /h
Rotating speed	3.395 1/min
Impeller type	radial
Speed controllable	✓
Reversing capacity	–
Type of voltage	Alternating current
Rated voltage	230 V
Frequency	50 Hz/60 Hz
Nominal output	78 W
I <sub>max</sub>	0,7 A
Degree of protection	IP X5
Insulation class	F
Pole-changeable	–
Mains cable	3 x 1,5 mm <sup>2</sup>
Installation site	Roof
Installation position	vertical
Material	Sheet steel, galvanised
Colour	Silver
Weight	4,5 kg
Weight including packaging	5,1 kg
Nominal size	100 mm
Width	333 mm
Height	261 mm
Depth	333 mm
Width with packaging	385 mm
Height with packaging	300 mm
Depth with packaging	385 mm
Airstream temperature at I <sub>Max</sub>	-20 °C up to 60 °C
Sound pressure level	56 dB(A) (Distance 3 m, Free-field conditions)

# EHD 10 EC

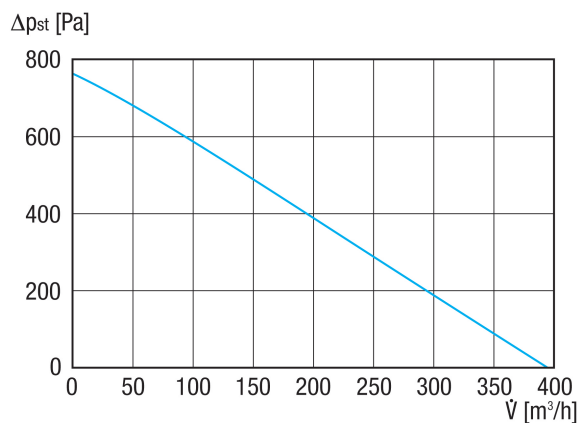
Packing unit	1 piece
Range	E
GTIN (EAN)	4012799735595

## Sound power level in octave range

	63 Hz	125 Hz	250 Hz	500 Hz	1 kHz	2 kHz	4 kHz	8 kHz	Total
$L_{WA5}$ (dB(A))	-	-	-	-	-	-	-	-	77

$L_{WA5}$ = free inlet sound power level in dB.

## Characteristic curve



# EHD 10 EC

Dimensioned drawing [mm]

