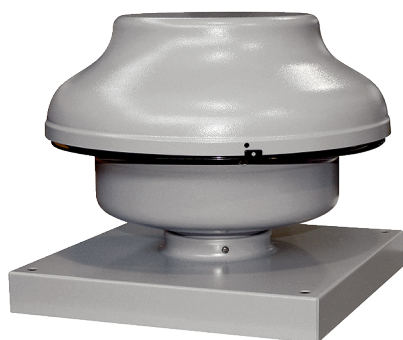


# EHD 15/2 EC



## Short description

Mini roof fan for private or commercial use, DN 150, air volume 773 m<sup>3</sup>/h, motor with EC technology

## Application examples

Greenhouse, Garage, Building container, Foreman's office

Article number 0073.0591

## Technical data

|   |  |
|---|--|
| Air flow volume                           | 773 m <sup>3</sup> /h                          |
| Rotating speed                            | 3.395 1/min                                    |
| Impeller type                             | radial   |
| Speed controllable                        | ✓  |
| Reversing capacity                        | –  |
| Type of voltage                           | Alternating current                            |
| Rated voltage                             | 230 V  |
| Frequency                                 | 50 Hz/60 Hz                                    |
| Nominal output                            | 163 W  |
| I <sub>max</sub>                          | 0,7 A  |
| Degree of protection                      | IP X5  |
| Insulation class                          | F  |
| Pole-changeable                           | –  |
| Mains cable                               | 3 x 1,5 mm <sup>2</sup>                        |
| Installation site                         | Roof   |
| Installation position                     | vertical                                       |
| Material                                  | Sheet steel, galvanised                        |
| Colour                                    | Silver   |
| Weight                                    | 7,8 kg   |
| Weight including packaging                | 7,7 kg   |
| Nominal size                              | 150 mm   |
| Width                                     | 405 mm   |
| Height                                    | 405 mm   |
| Depth                                     | 302 mm   |
| Width with packaging                      | 435 mm   |
| Height with packaging                     | 415 mm   |
| Depth with packaging                      | 340 mm   |
| Airstream temperature at I <sub>Max</sub> | -20 °C up to 60 °C                             |
| Sound pressure level                      | 53 dB(A) (Distance 3 m, Free-field conditions) |

# EHD 15/2 EC

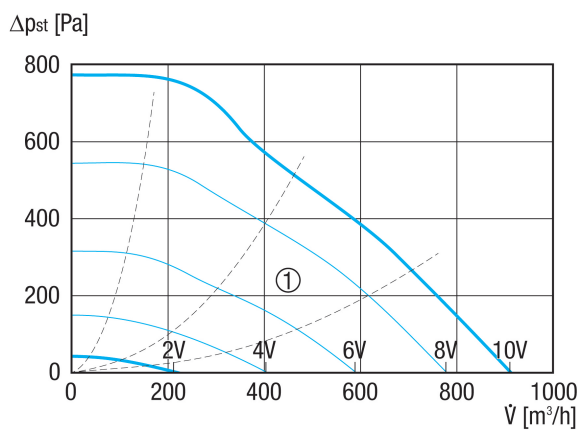
|              |               |
|--------------|---------------|
| Packing unit | 1 piece       |
| Range        | E             |
| GTIN (EAN)   | 4012799735915 |

## Sound power level in octave range

|   | 63 Hz | 125 Hz | 250 Hz | 500 Hz | 1 kHz | 2 kHz | 4 kHz | 8 kHz | Total |
|---|-------|--------|--------|--------|-------|-------|-------|-------|-------|
| <b>L<sub>WA5, S2</sub></b><br><b>(dB(A))</b>  | –     | –      | 25     | –      | 31    | 19    | –     | –     | 39    |
| <b>L<sub>WA5, S4</sub></b><br><b>(dB(A))</b>  | –     | 30     | 39     | 37     | 46    | 45    | 37    | 16    | 56    |
| <b>L<sub>WA5, S6</sub></b><br><b>(dB(A))</b>  | –     | 34     | 48     | 46     | 55    | 53    | 53    | 37    | 64    |
| <b>L<sub>WA5, S8</sub></b><br><b>(dB(A))</b>  | –     | 39     | 55     | 52     | 61    | 59    | 56    | 52    | 70    |
| <b>L<sub>WA5, S10</sub></b><br><b>(dB(A))</b> | –     | 42     | 59     | 58     | 66    | 64    | 61    | 64    | 75    |

L<sub>WA5</sub>= free inlet sound power level in dB.

## Characteristic curve



① Auxiliary characteristics curves for control voltage 2 - 10 V

# EHD 15/2 EC

Dimensioned drawing [mm]

