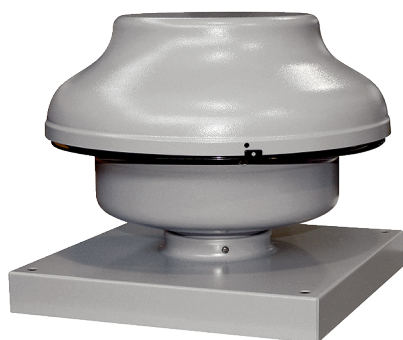


# EHD 20/2 EC



## Short description

Mini roof fan for private or commercial use, DN 200, air volume 872 m³/h, motor with EC technology

## Application examples

Greenhouse, Garage, Building container, Foreman's office

Article number 0073.0593

## Technical data

Air flow volume	872 m³/h
Rotating speed	3.395 1/min
Impeller type	radial
Speed controllable	✓
Reversing capacity	–
Type of voltage	Alternating current
Rated voltage	230 V
Frequency	50 Hz/60 Hz
Nominal output	173 W
I <sub>max</sub>	0,77 A
Degree of protection	IP X5
Insulation class	F
Pole-changeable	–
Mains cable	3 x 1,5 mm²
Installation site	Roof
Installation position	vertical
Material	Sheet steel, galvanised
Colour	Silver
Weight	7,8 kg
Weight including packaging	7,7 kg
Nominal size	200 mm
Width	405 mm
Height	405 mm
Depth	302 mm
Width with packaging	435 mm
Height with packaging	415 mm
Depth with packaging	340 mm
Airstream temperature at I <sub>Max</sub>	-20 °C up to 60 °C
Sound pressure level	48 dB(A) (Distance 3 m, Free-field conditions)

# EHD 20/2 EC

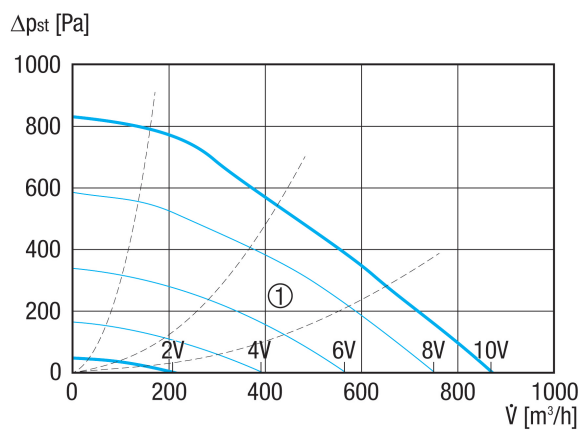
Packing unit	1 piece
Range	E
GTIN (EAN)	4012799735939

## Sound power level in octave range

	63 Hz	125 Hz	250 Hz	500 Hz	1 kHz	2 kHz	4 kHz	8 kHz	Total
<b>L<sub>WA5, S2</sub></b> <b>(dB(A))</b>	–	17	31	32	35	24	0	0	43
<b>L<sub>WA5, S4</sub></b> <b>(dB(A))</b>	–	29	43	45	50	47	36	25	59
<b>L<sub>WA5, S6</sub></b> <b>(dB(A))</b>	–	34	50	53	58	55	56	40	67
<b>L<sub>WA5, S8</sub></b> <b>(dB(A))</b>	–	38	56	60	66	62	57	51	74
<b>L<sub>WA5, S10</sub></b> <b>(dB(A))</b>	–	43	58	63	68	65	62	62	77

L<sub>WA5</sub>= free inlet sound power level in dB.

## Characteristic curve



① Auxiliary characteristics curves for control voltage 2 - 10 V

# EHD 20/2 EC

Dimensioned drawing [mm]

