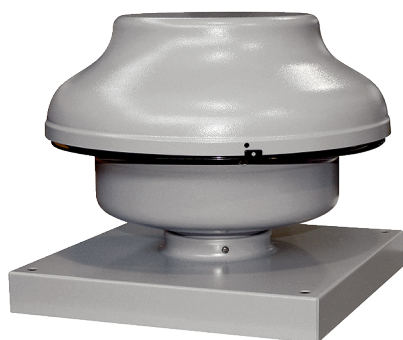


EHD 25/2 EC



Short description

Mini roof fan for private or commercial use, DN 250, air volume 911 m³/h, motor with EC technology

Application examples

Greenhouse, Garage, Building container, Foreman's office

Article number 0073.0594

Technical data

Air flow volume	911 m ³ /h
Rotating speed	3.395 1/min
Impeller type	radial
Speed controllable	✓
Reversing capacity	–
Type of voltage	Alternating current
Rated voltage	230 V
Frequency	50 Hz/60 Hz
Nominal output	172 W
I _{max}	0,77 A
Degree of protection	IP X5
Insulation class	F
Pole-changeable	–
Mains cable	3 x 1,5 mm ²
Installation site	Roof
Installation position	vertical
Material	Sheet steel, galvanised
Colour	Silver
Weight	7,8 kg
Weight including packaging	7,5 kg
Nominal size	250 mm
Width	405 mm
Height	405 mm
Depth	302 mm
Width with packaging	435 mm
Height with packaging	415 mm
Depth with packaging	340 mm
Airstream temperature at I _{Max}	-20 °C up to 60 °C
Sound pressure level	49 dB(A) (Distance 3 m, Free-field conditions)

EHD 25/2 EC

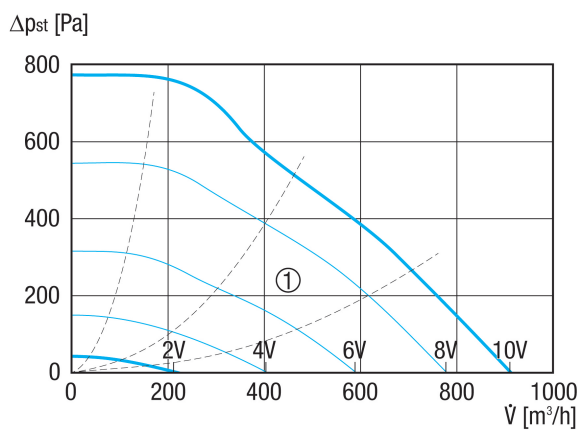
Packing unit	1 piece
Range	E
GTIN (EAN)	4012799735946

Sound power level in octave range

	63 Hz	125 Hz	250 Hz	500 Hz	1 kHz	2 kHz	4 kHz	8 kHz	Total
L_{WA5, S2} (dB(A))	–	17	29	31	32	21	0	0	42
L_{WA5, S4} (dB(A))	–	30	41	44	49	47	37	18	59
L_{WA5, S6} (dB(A))	–	38	49	52	57	56	56	39	67
L_{WA5, S8} (dB(A))	–	40	55	60	62	63	57	54	74
L_{WA5, S10} (dB(A))	–	45	59	64	67	67	63	66	78

L_{WA5}= free inlet sound power level in dB.

Characteristic curve



① Auxiliary characteristics curves for control voltage 2 - 10 V

EHD 25/2 EC

Dimensioned drawing [mm]

