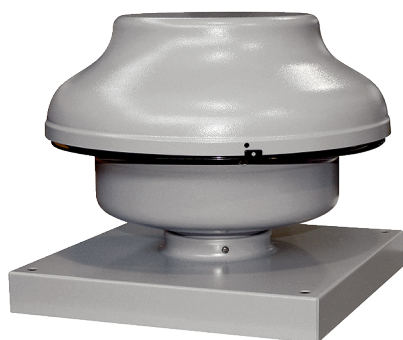


EHD 31 EC



Short description

Mini roof fan for private or commercial use, DN 315, air volume 1,184 m³/h, motor with EC technology

Application examples

Greenhouse, Garage, Building container, Foreman's office

Article number 0073.0565

Technical data

Air flow volume	1.184 m ³ /h
Rotating speed	3.395 1/min
Impeller type	radial
Speed controllable	✓
Reversing capacity	–
Type of voltage	Alternating current
Rated voltage	230 V
Frequency	50 Hz/60 Hz
Nominal output	175 W
I _{max}	1,5 A
Degree of protection	IP X5
Insulation class	F
Pole-changeable	–
Mains cable	3 x 1,5 mm ²
Installation site	Roof
Installation position	vertical
Material	Sheet steel, galvanised
Colour	Silver
Weight	10 kg
Weight including packaging	9,3 kg
Nominal size	315 mm
Width	484 mm
Height	484 mm
Depth	358 mm
Width with packaging	555 mm
Height with packaging	575 mm
Depth with packaging	415 mm
Airstream temperature at I _{Max}	-20 °C up to 60 °C
Sound pressure level	53 dB(A) (Distance 3 m, Free-field conditions)

EHD 31 EC

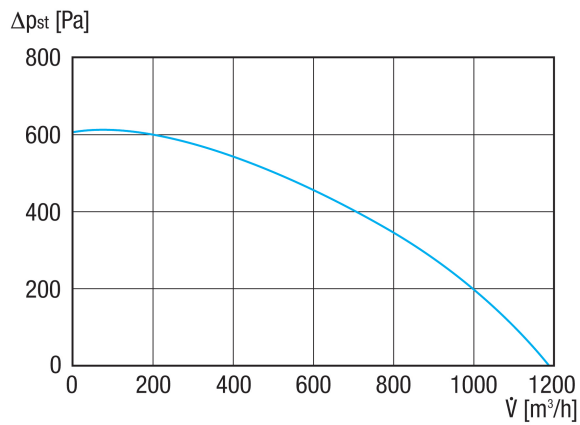
Packing unit	1 piece
Range	E
GTIN (EAN)	4012799735656

Sound power level in octave range

	63 Hz	125 Hz	250 Hz	500 Hz	1 kHz	2 kHz	4 kHz	8 kHz	Total
L_{WA5} (dB(A))	-	-	-	-	-	-	-	-	74

L_{WA5} = free inlet sound power level in dB.

Characteristic curve



EHD 31 EC

Dimensioned drawing [mm]

