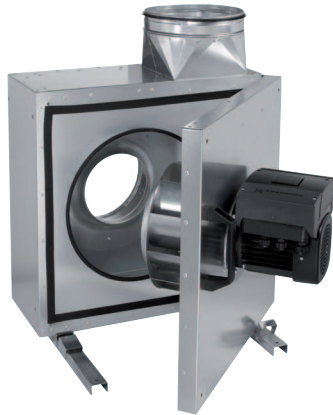


# EKR 25 FU



## Short description

Sound-insulated exhaust air box with frequency converter, DN 250, alternating current

## Application examples

Extraction hood, Canteen kitchen, Workplace air extraction system, Machine extraction unit

Article number 0080.0895

## Technical data

Air flow volume	2.730 m <sup>3</sup> /h
Rotating speed	2.940 1/min
Speed controllable	✓
Type of voltage	Alternating current
Rated voltage	230 V
Frequency	50 Hz
Nominal output	690 W
I <sub>nom</sub>	3,2 A
I <sub>max</sub>	3,3 A
Degree of protection	IP X4
Degree of protection for motor	IP 55
Insulation class	F
Mains cable	5 x 1,5 mm <sup>2</sup>
Weight	40 kg
Swivelling fan	✓
Nominal size	250 mm
Width with packaging	800 mm
Height with packaging	750 mm
Depth with packaging	675 mm
Airstream temperature at nominal current	-20 °C up to 120 °C
Airstream temperature at I <sub>Max</sub>	-20 °C up to 120 °C
Ambient temperature	-25 °C up to 40 °C
Packing unit	1 piece
Range	E
GTIN (EAN)	4012799808954

# EKR 25 FU

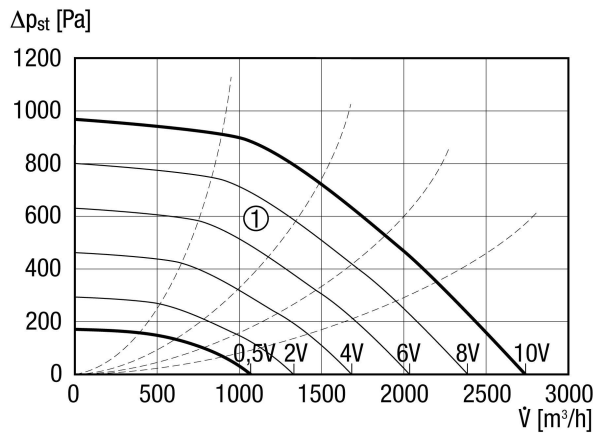
Sound power level in octave range

	63 Hz	125 Hz	250 Hz	500 Hz	1 kHz	2 kHz	4 kHz	8 kHz	Total
L <sub>WA2</sub> , Level 2 (dB(A))	–	58	58	54	64	61	58	54	68
L <sub>WA2</sub> , Level 3 (dB(A))	–	58	57	54	65	61	56	51	68
L <sub>WA2</sub> , Level 4 (dB(A))	–	52	53	54	65	60	55	48	67
L <sub>WA2</sub> , Level 5 (dB(A))	–	54	54	55	66	61	56	47	68
L <sub>WA5</sub> , Level 2 (dB(A))	–	71	73	76	74	74	72	65	82
L <sub>WA5</sub> , Level 3 (dB(A))	–	64	70	76	74	73	71	64	80
L <sub>WA5</sub> , Level 4 (dB(A))	–	63	72	80	78	79	78	71	85
L <sub>WA5</sub> , Level 5 (dB(A))	–	65	73	81	78	80	79	73	86
L <sub>WA6</sub> , Level 2 (dB(A))	–	63	75	76	76	77	73	66	83
L <sub>WA6</sub> , Level 3 (dB(A))	–	59	70	74	76	75	71	66	81
L <sub>WA6</sub> , Level 4 (dB(A))	–	59	72	78	80	83	79	74	87
L <sub>WA6</sub> , Level 5 (dB(A))	–	62	74	80	81	83	80	75	88

L<sub>WA2</sub>= housing sound power level in dB.  
 L<sub>WA5</sub>= free inlet sound power level in dB.  
 L<sub>WA6</sub>= free outlet sound power level in dB.

# EKR 25 FU

## Characteristic curve



① Auxiliary characteristics curves for control voltage 0.5 - 10 V

## Dimensioned drawing [mm]

