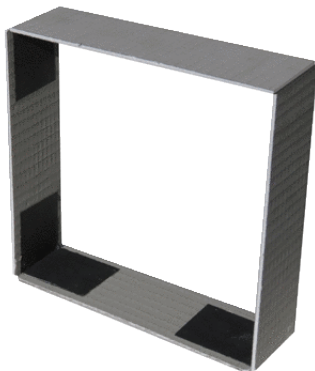


# ER-MR EC



## Short description

Wall frames for housings that have been plastered too deep, to prevent the air from being drawn out of the shaft, polystyrene, cement-bonded

Article number 0192.0765

## Technical data

Type of installation	Recessed-mounted
Material	Polystyrene, cement-bonded
Colour	grey
Weight	0,27 kg
Weight including packaging	0,51 kg
Width	265 mm
Height	265 mm
Depth	75 mm
Width with packaging	695 mm
Height with packaging	85 mm
Depth with packaging	85 mm
Packing unit	1 piece
Range	B
GTIN (EAN)	4012799927655

## Dimensioned drawing [mm]

