

# ER 60 H



## Short description

Fan insert with cover and filter for installation in recessed-mounted housings, air volume 62 m³/h, with humidity control and base load circuit

## Application examples

Bathroom, Kitchen, Multiple family unit, Day room, Dining room

Article number 0084.0104

## Technical data

|   |                                    |
|---|------------------------------------|
| Model                                     | Humidity control                   |
| Air flow volume                           | 35 m³/h / 62 m³/h                  |
| Rotating speed                            | 850 1/min / 1.250 1/min            |
| Air direction                             | Air extraction                     |
| Speed controllable                        | –                                  |
| SEC average                               | -20,12 kWh/(m²*a)                  |
| Type of voltage                           | Alternating current                |
| Rated voltage                             | 230 V                              |
| Frequency                                 | 50 Hz                              |
| Power consumption                         | 10 W / 21 W                        |
| I <sub>max</sub>                          | 0,12 A / 0,16 A                    |
| Degree of protection                      | IP X5                              |
| Mains cable                               | 3/5 x 1.5 mm²                      |
| Installation site                         | Wall / Ceiling                     |
| Type of installation                      | Recessed-mounted                   |
| System type                               | Decentralised                      |
| Material                                  | Synthetic material                 |
| Colour                                    | Traffic white, similar to RAL 9016 |
| Weight                                    | 1,52 kg                            |
| Weight including packaging                | 1,8 kg                             |
| Filter class                              | ISO Coarse 30 % (G2)               |
| Air outlet direction                      | at side                            |
| Width                                     | 250 mm                             |
| Height                                    | 250 mm                             |
| Depth                                     | 150 mm                             |
| Width with packaging                      | 280 mm                             |
| Height with packaging                     | 280 mm                             |
| Depth with packaging                      | 155 mm                             |
| Airstream temperature at I <sub>Max</sub> | 40 °C                              |

# ER 60 H

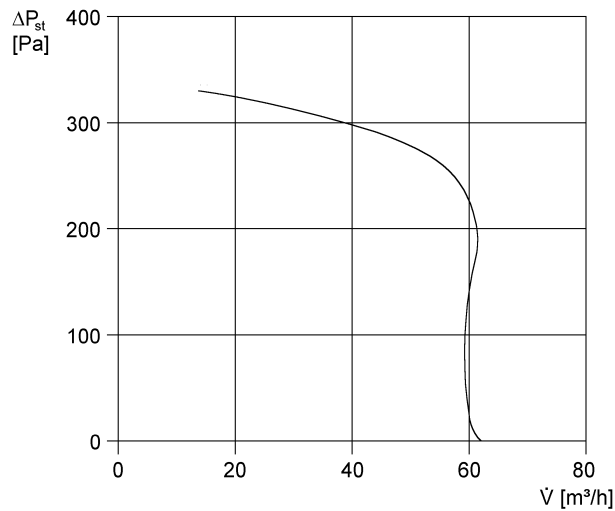
|                      |  |
|----------------------|--|
| Overrun time         | 6 min (Overrun time available when using an optional switch (e.g. light switch))   |
| Sound pressure level | 25 dB(A) / 36 dB(A) (Specifications in accordance with DIN 18017-3 at an equivalent absorption area $A_L = 10 \text{ m}^2$ ) |
| Packing unit         | 1 piece  |
| Range                | B  |
| GTIN (EAN)           | 4012799841043  |

## Sound power level in octave range

|                                    | 63 Hz | 125 Hz | 250 Hz | 500 Hz | 1 kHz | 2 kHz | 4 kHz | 8 kHz | Total |
|------------------------------------|-------|--------|--------|--------|-------|-------|-------|-------|-------|
| $L_{WA7, \text{ low}}$<br>(dB(A))  | –     | –      | –      | –      | –     | –     | –     | –     | 29    |
| $L_{WA7, \text{ high}}$<br>(dB(A)) | –     | –      | –      | –      | –     | –     | –     | –     | 40    |

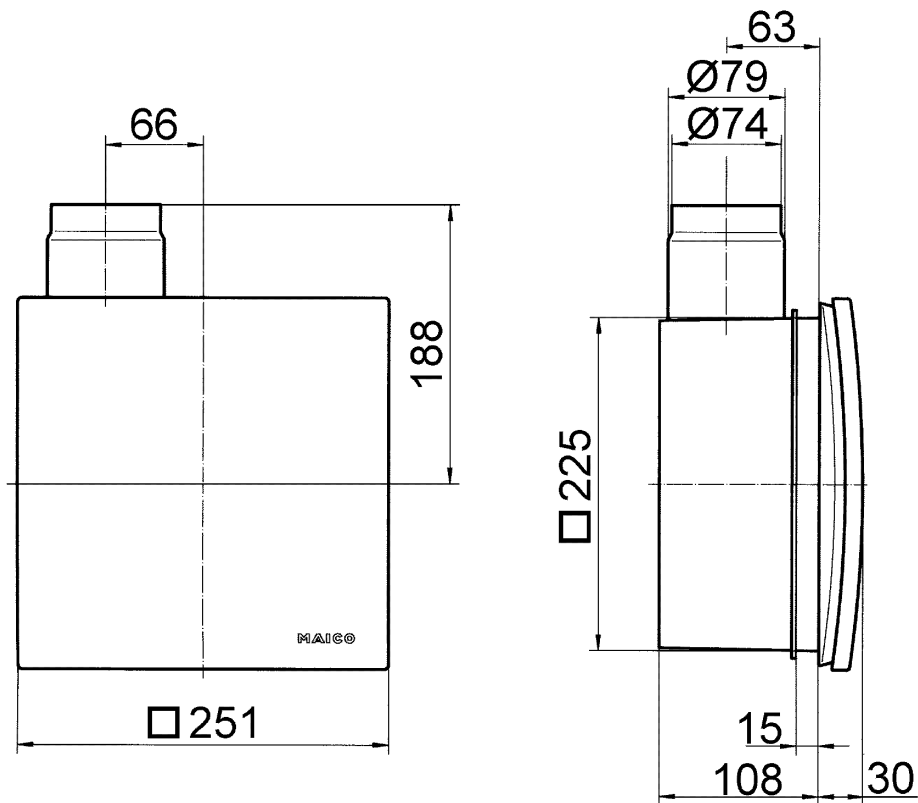
$L_{WA7}$ = housing and free inlet sound power level in dB.

## Characteristic curve



# ER 60 H

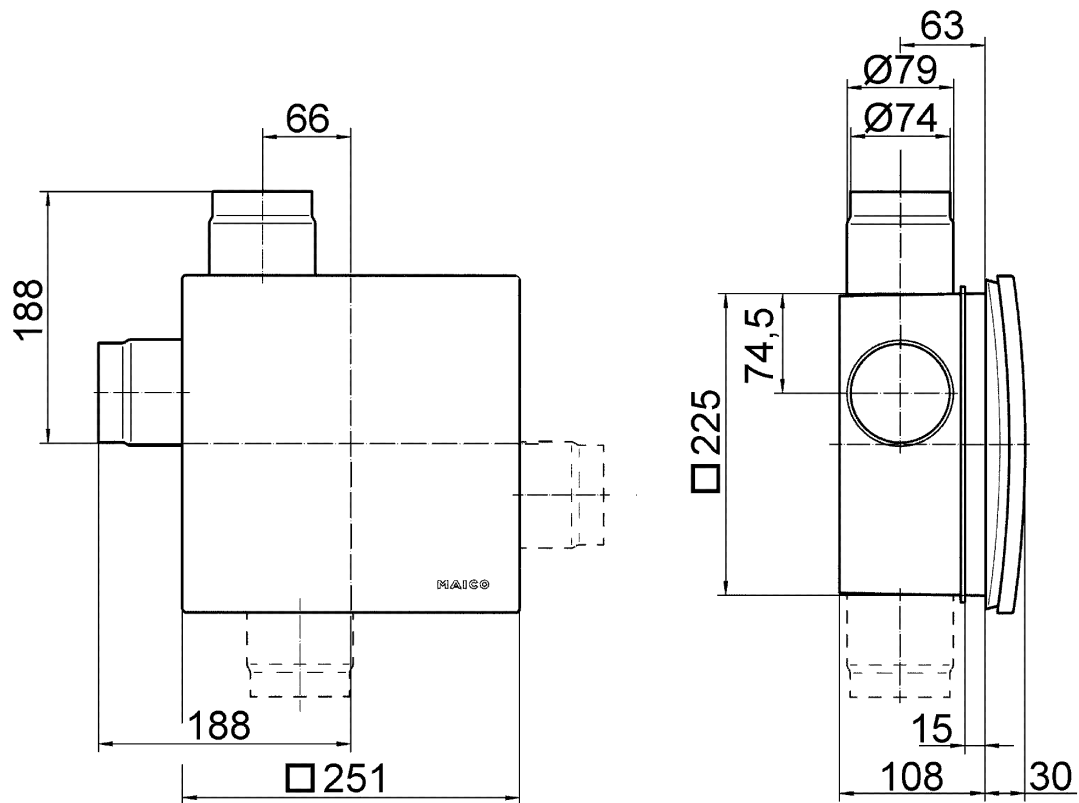
Dimensioned drawing [mm]



ER fan insert with recessed-mounted housing ER-UP/G or ER-UPD

# ER 60 H

Dimensioned drawing [mm]



ER fan insert with recessed-mounted housing ER-UP/G or ER-UPD and second room connection