

ER 60 VZ



Short description

Fan insert with cover and filter for installation in recessed-mounted housings, air volume 62 m³/h, with timer

Application examples

Bathroom, Kitchen, Multiple family unit, Day room, Dining room

Article number 0084.0101

Technical data

| | |
|---|------------------------------------|
| Model | Time delay switch |
| Air flow volume | 62 m³/h |
| Rotating speed | 1.250 1/min |
| Air direction | Air extraction |
| Speed controllable | – |
| SEC average | -3,43 kWh/(m²*a) |
| Type of voltage | Alternating current |
| Rated voltage | 230 V |
| Frequency | 50 Hz |
| Power consumption | 21 W |
| I _{max} | 0,16 A |
| Degree of protection | IP X5 |
| Mains cable | 5 x 1,5 mm² |
| Installation site | Wall / Ceiling |
| Type of installation | Recessed-mounted |
| System type | Decentralised |
| Material | Synthetic material |
| Colour | Traffic white, similar to RAL 9016 |
| Weight | 1,5 kg |
| Weight including packaging | 1,78 kg |
| Filter class | ISO Coarse 30 % (G2) |
| Air outlet direction | at side |
| Width | 250 mm |
| Height | 250 mm |
| Depth | 140 mm |
| Width with packaging | 285 mm |
| Height with packaging | 285 mm |
| Depth with packaging | 155 mm |
| Airstream temperature at I _{Max} | 40 °C |

ER 60 VZ

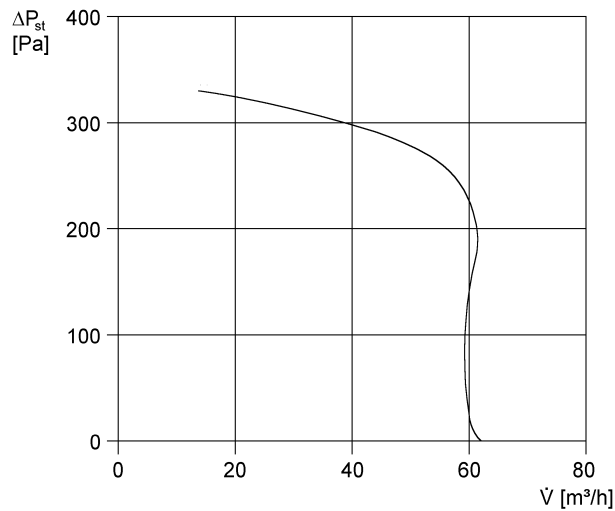
| | |
|----------------------|--|
| Overrun time | 6 min |
| Start delay | 50 s |
| Sound pressure level | 36 dB(A) (Specifications in accordance with DIN 18017-3 at an equivalent absorption area $A_L = 10 \text{ m.}^2$) |
| Packing unit | 1 piece |
| Range | B |
| GTIN (EAN) | 4012799841012 |

Sound power level in octave range

| | 63 Hz | 125 Hz | 250 Hz | 500 Hz | 1 kHz | 2 kHz | 4 kHz | 8 kHz | Total |
|------------------------------------|-------|--------|--------|--------|-------|-------|-------|-------|-------|
| $L_{WA7, \text{ high}}$ (dB(A)) | – | – | – | – | – | – | – | – | 40 |

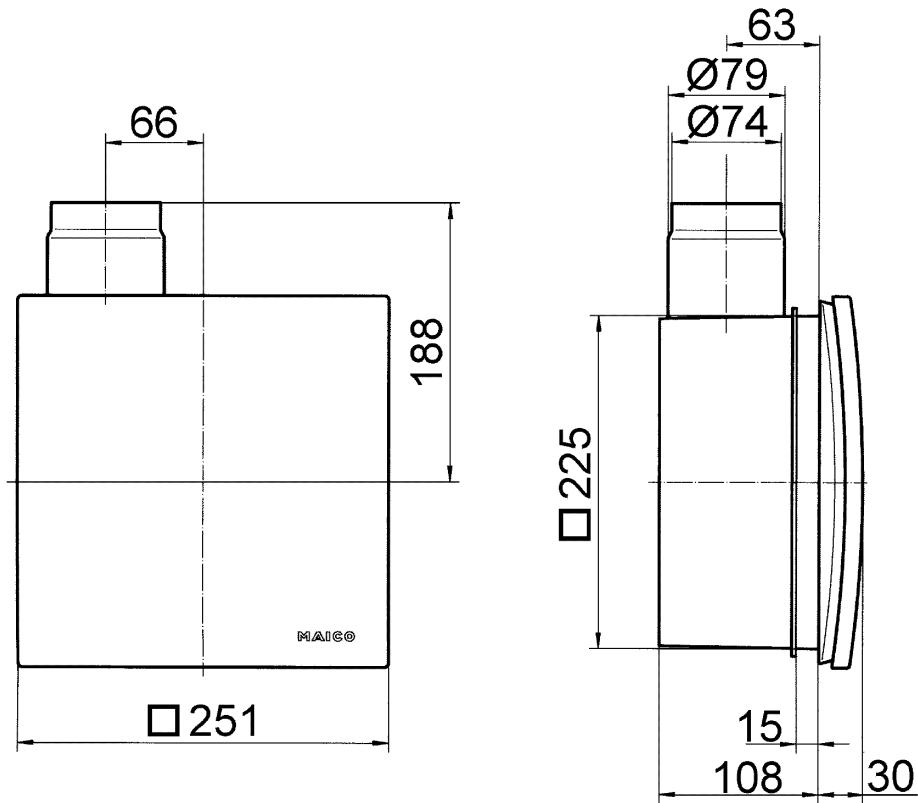
L_{WA7} = housing and free inlet sound power level in dB.

Characteristic curve



ER 60 VZ

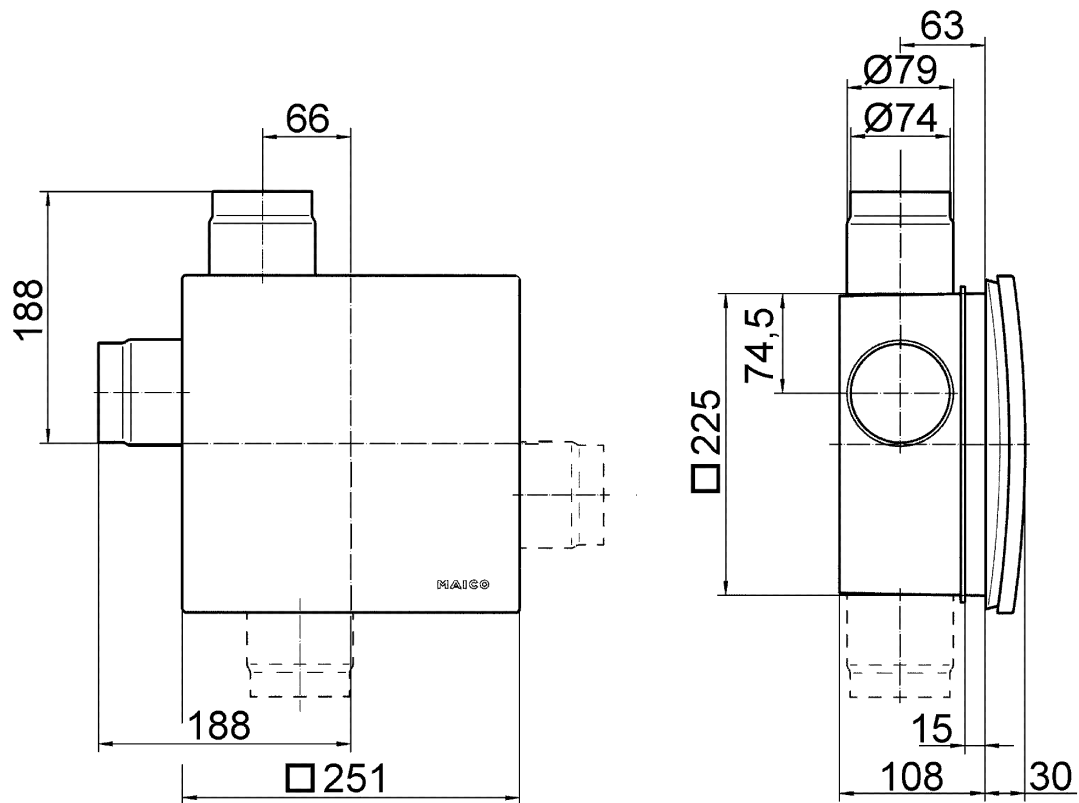
Dimensioned drawing [mm]



ER fan insert with recessed-mounted housing ER-UP/G or ER-UPD

ER 60 VZ

Dimensioned drawing [mm]



ER fan insert with recessed-mounted housing ER-UP/G or ER-UPD and second room connection