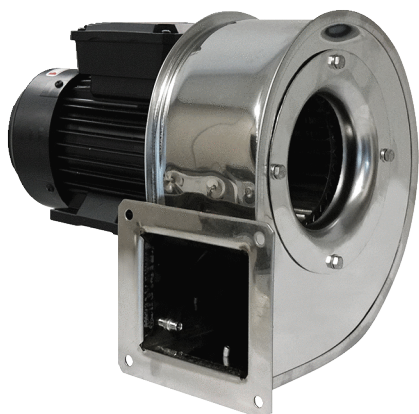


GRM ES 16/2 D



Short description

Metal centrifugal blower with stainless steel housing, size 160, three-phase AC

Application examples

Industrial applications

Article number 0073.0323

Technical data

| | |
|---|--------------------|
| Air flow volume | 2.318 m³/h |
| Rotating speed | 2.880 1/min |
| Impeller type | radial |
| Speed controllable | ✓ |
| Reversing capacity | – |
| Type of voltage | Three-phase AC |
| Rated voltage | 400 V |
| Frequency | 50 Hz |
| Nominal output | 750 W |
| I _{nom} | 1,7 A |
| Degree of protection | IP 55 |
| Insulation class | F |
| Pole-changeable | – |
| Installation site | Duct connection |
| Installation position | Horizontal |
| Housing material | Stainless steel |
| Impeller material | Stainless steel |
| Colour | Silver |
| Weight | 17 kg |
| Weight including packaging | 18 kg |
| Size | 160 |
| Width | 390 mm |
| Height | 355 mm |
| Depth | 318 mm |
| Width with packaging | 520 mm |
| Height with packaging | 480 mm |
| Depth with packaging | 440 mm |
| Airstream temperature at I _{Max} | -20 °C up to 80 °C |
| PTC DIN 44082 | M 100 |

GRM ES 16/2 D

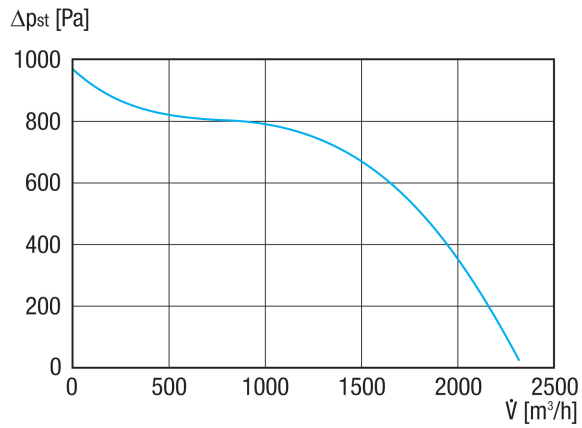
| | |
|--------------|---------------|
| Packing unit | 1 piece |
| Range | C |
| GTIN (EAN) | 4012799733232 |

Sound power level in octave range

| | 63 Hz | 125 Hz | 250 Hz | 500 Hz | 1 kHz | 2 kHz | 4 kHz | 8 kHz | Total |
|--|-------|--------|--------|--------|-------|-------|-------|-------|-------|
| L_{WA5, S5} (dB(A)) | 53 | 64 | 79 | 81 | 82 | 83 | 81 | 75 | 89 |

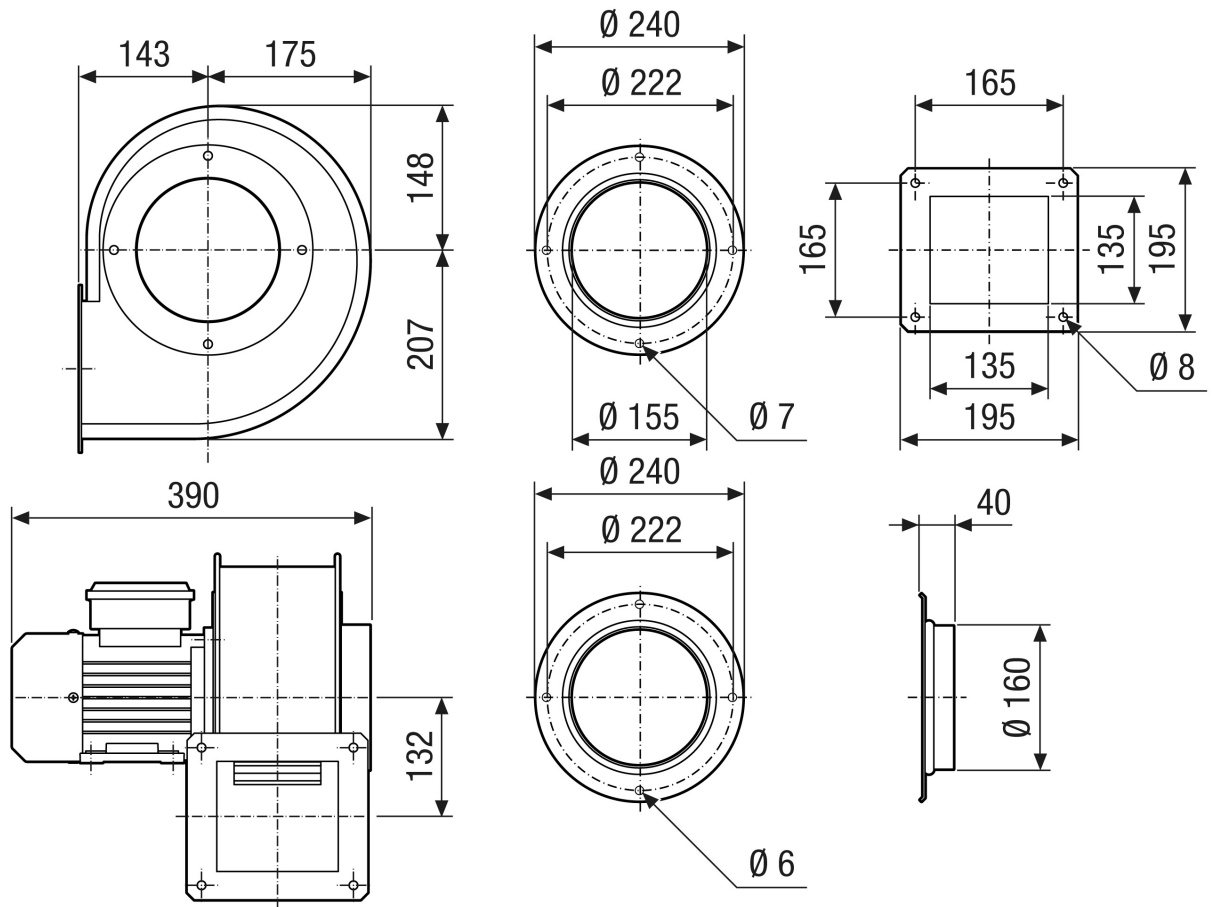
L_{WA5}= free inlet sound power level in dB.

Characteristic curve



GRM ES 16/2 D

Dimensioned drawing [mm]



GRM ES 16/2 D

Dimensioned drawing Housing orientation [mm]

| | | | | | | |
|---|--|--|--|---|--|--|
| ① |  |  |  |  |  |  |
| | 0° | 45° | 90° | 135° | 270° | 315° |
| ② |  |  |  |  |  |  |

① RD Right-hand version

② LG Left-hand version

The GRK 12/2 E and GRK 12/4 D variants are not available in right-hand version RD!

The standard orientation is always LG 270°