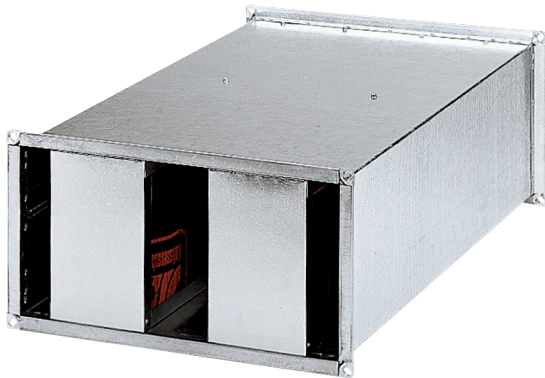


KSP 50/23



Short description

Attenuating lining sound absorber for 1000 mm x 500 mm ventilation channels

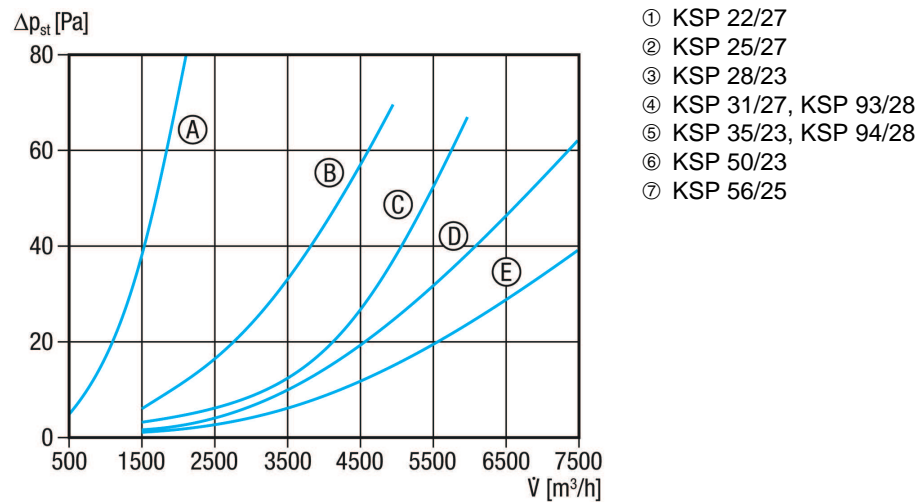
Article number 0092.0306

Technical data

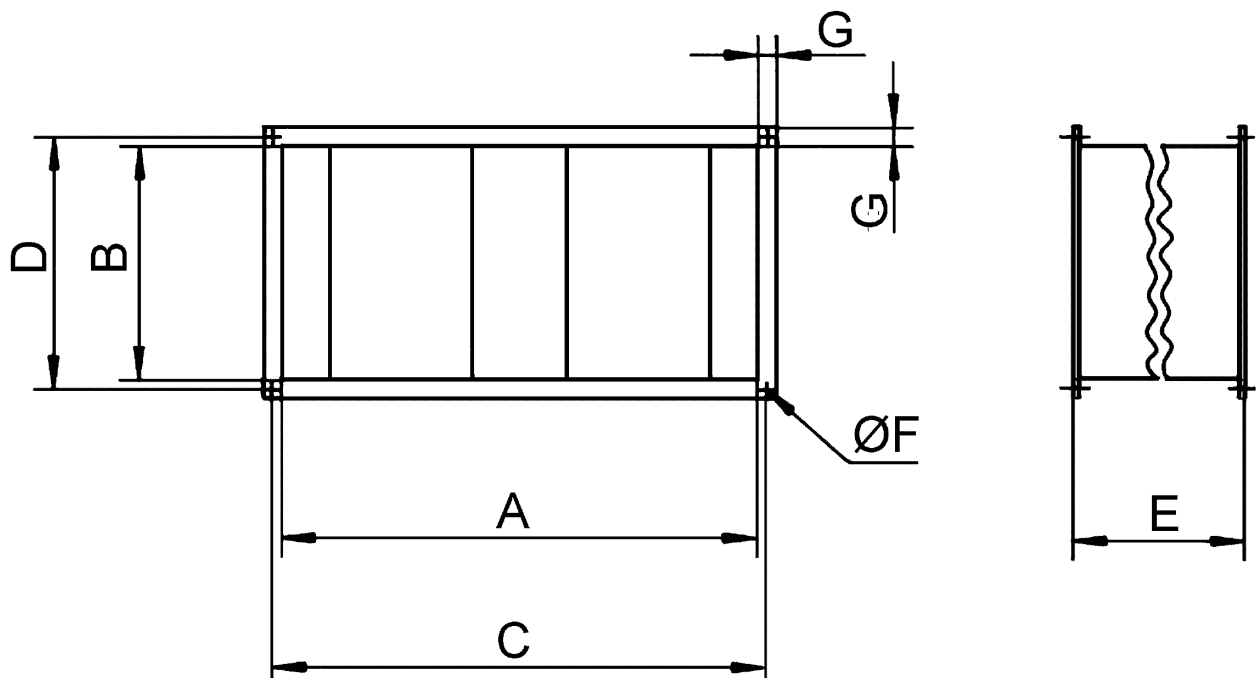
Min. flow velocity	
Max. flow velocity	20 m/s
Installation site	Channel
Housing material	Sheet steel, galvanised
Weight	83 kg
Weight including packaging	83 kg
Channel dimension	1.000 mm x 500 mm
Width	1.040 mm
Height	540 mm
Depth	1.500 mm
Width with packaging	1.040 mm
Height with packaging	540 mm
Depth with packaging	1.500 mm
Insertion loss at 63 Hz	4 dB
Insertion loss at 125 Hz	11 dB
Insertion loss at 250 Hz	23 dB
Insertion loss at 500 Hz	22 dB
Insertion loss at 1 kHz	22 dB
Insertion loss at 2 kHz	17 dB
Insertion loss at 4 kHz	12 dB
Insertion loss at 8 kHz	9 dB
Total insertion loss	
Insertion loss note	
Packing unit	1 piece
Range	D
GTIN (EAN)	4012799923060

KSP 50/23

Characteristic curve



Dimensioned drawing [mm]



A	B	C	D	E	F	G
1.000	500	1.020	520	1.500	12	20

KSP 50/23

