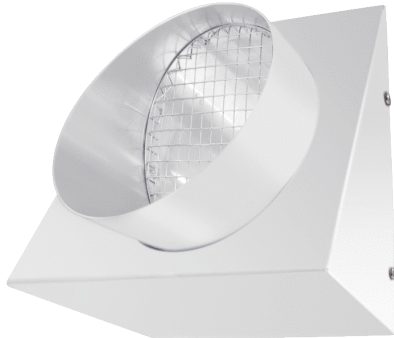


# KW-FL 12W



## Short description

Outgoing air wall supports, DN 125, colour pure white, similar to RAL 9010

## Application examples

Single-family house, Multiple family unit, New build, Redevelopment

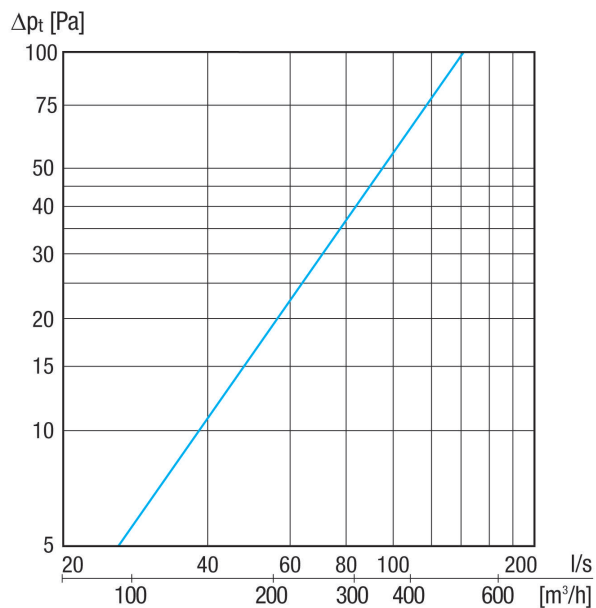
Article number 0152.0076

## Technical data

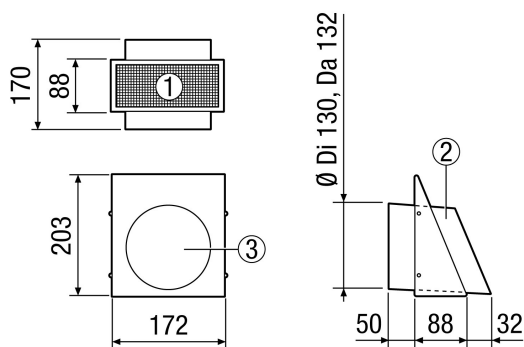
Air direction	Air extraction
Installation site	Outside wall
Material	Stainless steel (V2A)
Colour	Pure white, similar to RAL 9010
Weight	1,16 kg
Weight including packaging	1,31 kg
Nominal size	125 mm
Width	172 mm
Height	203 mm
Depth	88 mm
Width with packaging	195 mm
Height with packaging	215 mm
Depth with packaging	185 mm
Packing unit	1 piece
Range	K
GTIN (EAN)	4012799520764

# KW-FL 12W

## Characteristic curve



## Dimensioned drawing [mm]



- ① View from below
- ② Side view (outgoing air socket)
- ③ Front view - outgoing air socket