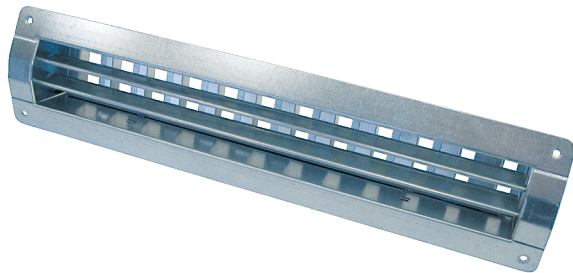


LGR 42/12



Short description

Internal grille for ventilation and air extraction for installation in ducts, sheet steel, galvanised, max. 500 m³/h

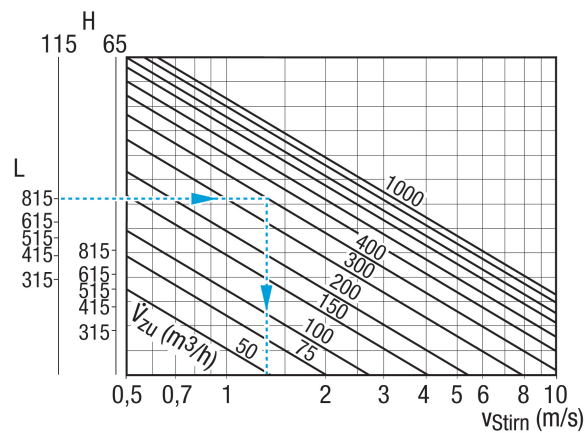
Article number 0151.0360

Technical data

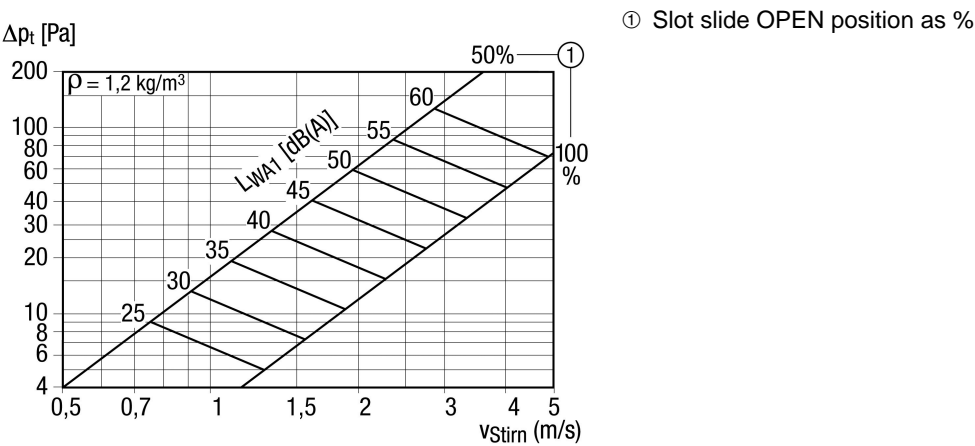
Air direction	Ventilation and air extraction
Practical air throughput at 75% opening of the slot slide	300 m³/h - 500 m³/h
Installation	Inside
Installation site	Duct
Material	Sheet steel, galvanised
Weight	1,29 kg
Weight including packaging	1,45 kg
Suitable for nominal size	300 mm - 800 mm (ideal 500 mm)
Width	458 mm
Height	113 mm
Depth	56 mm
Width with packaging	500 mm
Height with packaging	175 mm
Depth with packaging	70 mm
Packing unit	1 piece
Range	C
GTIN (EAN)	4012799513605

LGR 42/12

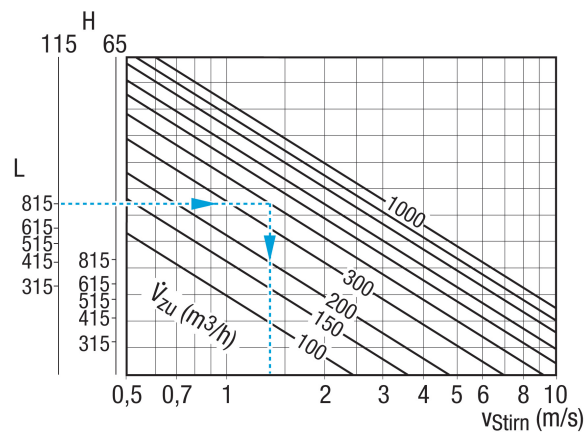
Characteristic curve Exhaust air front speed



Characteristic curve Exhaust air pressure losses

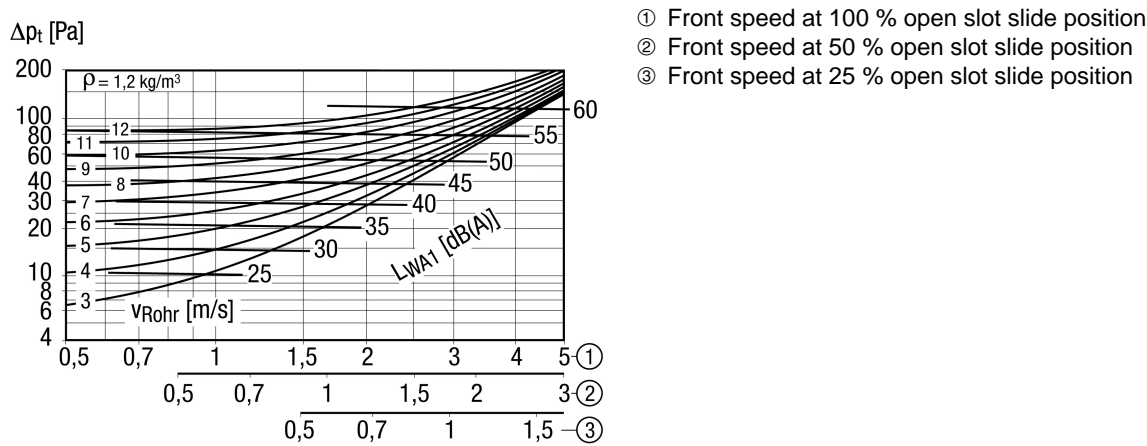


Characteristic curve Supply air front speed



LGR 42/12

Characteristic curve Supply air pressure losses



Dimensioned drawing [mm]

