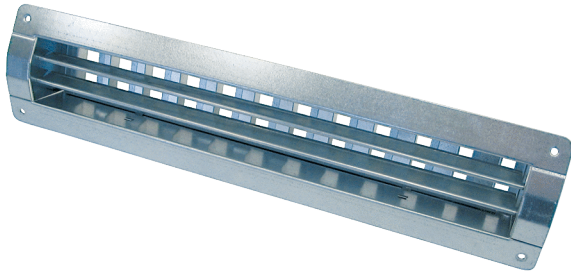


LGR 52/6



Short description

Internal grille for ventilation and air extraction for installation in ducts, sheet steel, galvanised, max. 300 m³/h

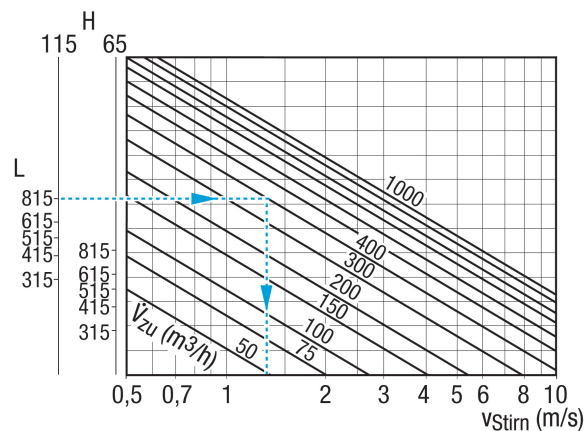
Article number 0151.0356

Technical data

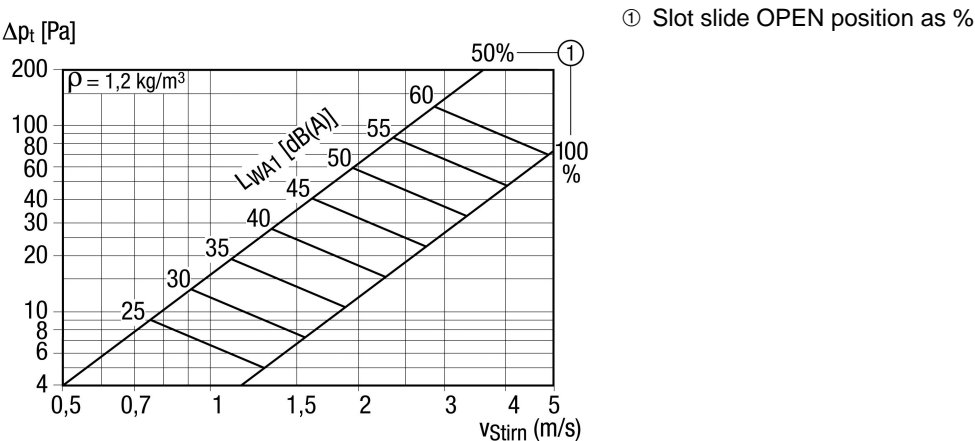
Air direction	Ventilation and air extraction
Practical air throughput at 75% opening of the slot slide	200 m³/h - 300 m³/h
Installation	Inside
Installation site	Duct
Material	Sheet steel, galvanised
Weight	0,98 kg
Weight including packaging	1,19 kg
Suitable for nominal size	140 mm - 400 mm (ideal 250 mm)
Width	558 mm
Height	113 mm
Depth	56 mm
Width with packaging	595 mm
Height with packaging	120 mm
Depth with packaging	75 mm
Packing unit	1 piece
Range	C
GTIN (EAN)	4012799513568

LGR 52/6

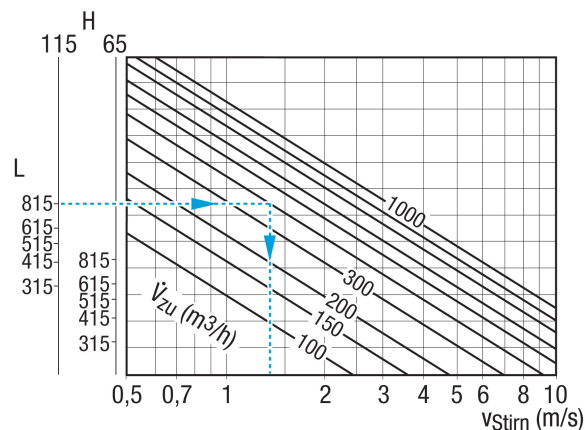
Characteristic curve Exhaust air front speed



Characteristic curve Exhaust air pressure losses

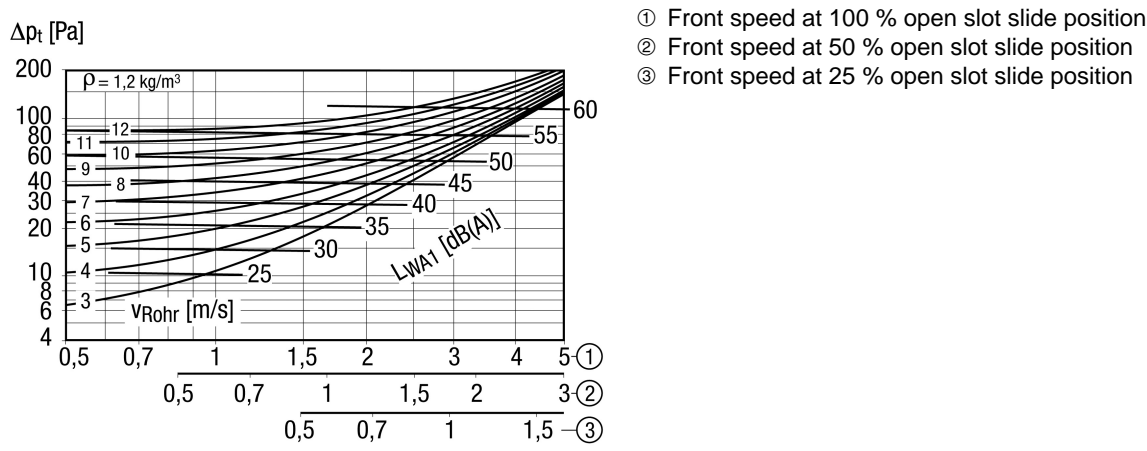


Characteristic curve Supply air front speed



LGR 52/6

Characteristic curve Supply air pressure losses



Dimensioned drawing [mm]

