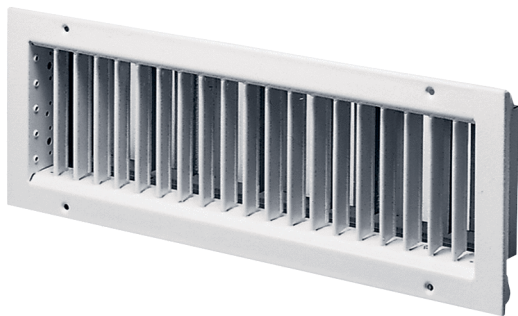


LGZ 62/22



Short description

Supply air grille for combination with EK 62/22 installation box

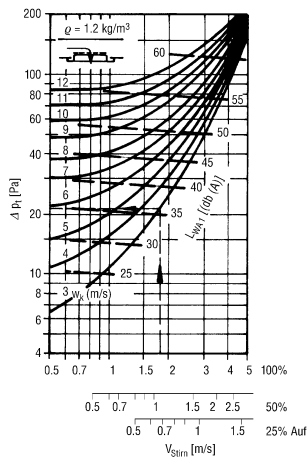
Article number 0151.0265

Technical data

| | |
|---|------------------------------|
| Air direction | Ventilation |
| Practical air throughput at 75% opening of the slot slide | 300 m³/h - 1000 m³/h |
| Installation | Inside |
| Installation site | Wall / Channel |
| Material | Sheet steel, stove-enamelled |
| Colour | light grey |
| Weight | 4,66 kg |
| Weight including packaging | 5,07 kg |
| Width | 650 mm |
| Height | 260 mm |
| Depth | 61 mm |
| Width with packaging | 680 mm |
| Height with packaging | 280 mm |
| Depth with packaging | 90 mm |
| Packing unit | 1 piece |
| Range | D |
| GTIN (EAN) | 4012799512653 |

LGZ 62/22

Characteristic curve Static pressure difference and acoustic data in countercurrent with frontal velocity



Stirnfläche (m²)

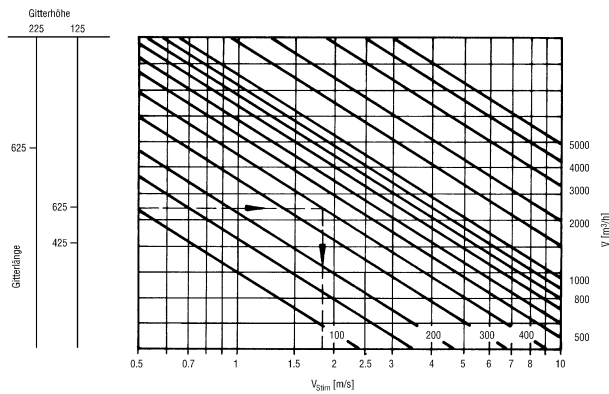
| Höhe | Länge | |
|------|-------|-------|
| 125 | 0,041 | 0,061 |
| 225 | — | 0,112 |

ΔPt (Pa) = Druckverlust
 L_{WA1} [dB(A)] = bewerteter Schalleistungspegel bezogen auf $A_{Stirn} = 0.08 \text{ m}^2$
 w_{Stirn} (m/s) = Ansauggeschwindigkeit bezogen auf A_{Stirn}
 k_f [dB(A)] = Korrekturfaktor
 A_{Stirn} (m²) = Stirnfläche
 L_{WA} = $L_{WA1} + k_f$
 w_k (m/s) = Kanalgeschwindigkeit

Korrekturfaktor:

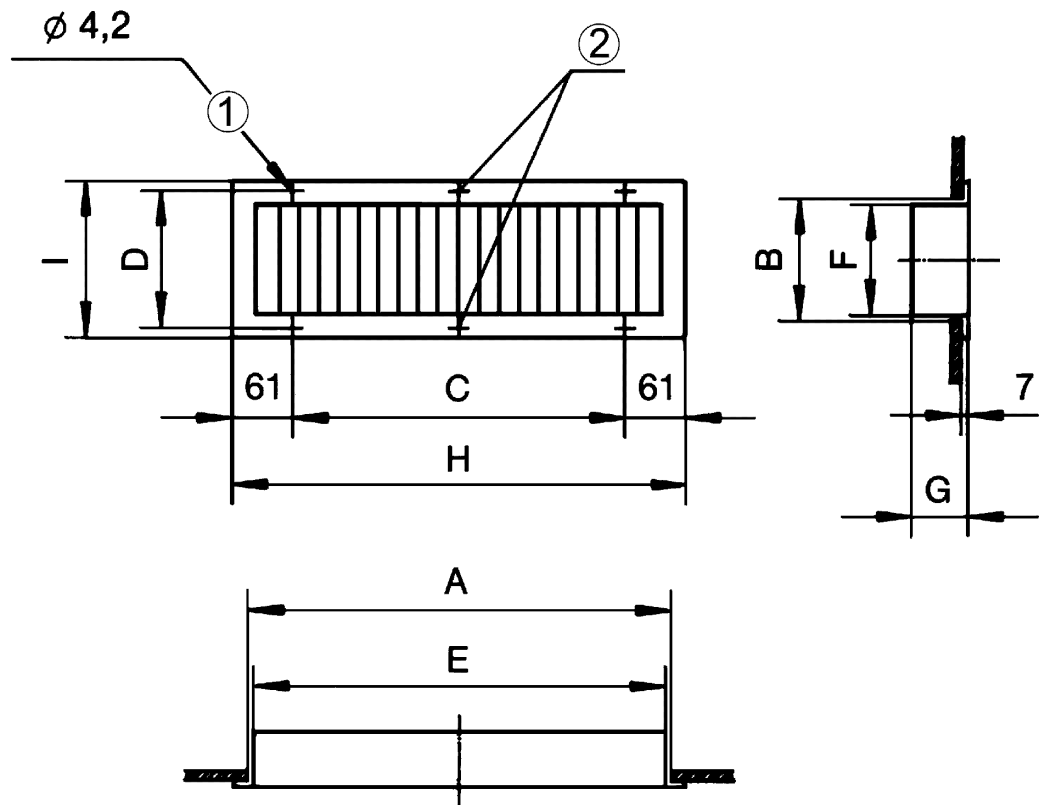
| A_{Stirn} (m²) | .04 | .06 | .11 |
|------------------|-----|-----|-----|
| k_f [dB(A)] | -3 | 0 | +2 |

Characteristic curve Air volumes in countercurrent with frontal velocity



LGZ 62/22

Dimensioned drawing [mm]



| A | B | C | D | E | F | G | H | I |
|-----|-----|-----|-----|-----|-----|----|-----|-----|
| 625 | 225 | 528 | 240 | 610 | 210 | 61 | 650 | 260 |

- ① For countersunk head screws
- ② Not available with LGA 42/12 and LGZ 42/12