

# MF-WL100 80/200



## Short description

Bracket for 90° coupling of MF-WE75 slide-in adaptor onto DN 100 valve, 80 mm high, connector length 310 mm

## Application examples

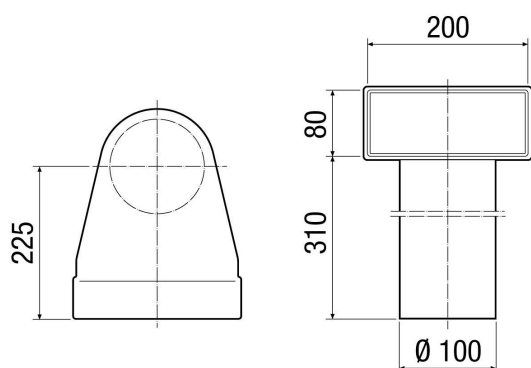
Single-family house, Multiple family unit, Industrial building, Office buildings, Modernizations

Article number 0018.0530

## Technical data

Air direction	Ventilation and air extraction
Installation site	Ceiling / Floor / Wall
Material	Sheet steel, galvanised
Weight	1,08 kg
Weight including packaging	1,1 kg
Nominal size	100 mm
Width	275 mm
Height	390 mm
Depth	200 mm
Width with packaging	275 mm
Height with packaging	390 mm
Depth with packaging	200 mm
Packing unit	1 piece
Range	K
GTIN (EAN)	4012799185307

## Dimensioned drawing [mm]



MF-WL100 80/200

