

PPB 30 AW



Short description

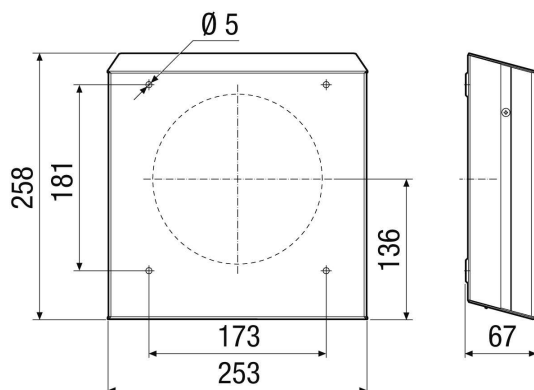
An aluminium external cover, colour: powder coated white, similar to RAL 9010, is needed as an accessory for the PPB 30 K and PPB 30 O# final assembly kits.

Article number 0093.1500

Technical data

Installation site	Outside wall
Installation position	horizontal
Housing material	Aluminium
Colour	White powder-coated, similar to RAL 9010
Weight	0,76 kg
Weight including packaging	0,96 kg
Width	253 mm
Height	258 mm
Depth	67 mm
Width with packaging	295 mm
Height with packaging	320 mm
Depth with packaging	86 mm
Packing unit	1 piece
Range	K
GTIN (EAN)	4012799991779

Dimensioned drawing [mm]



PPB 30 AW

