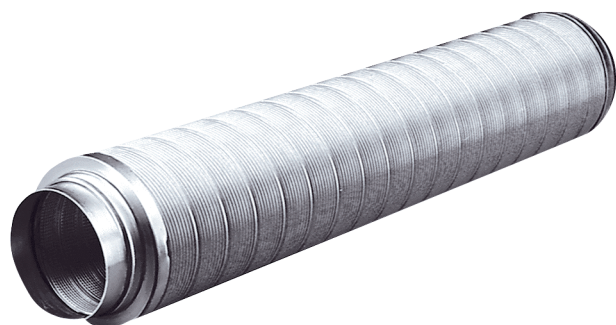


# RSR 28



### Short description

Tubular sound absorber with 25 mm sound absorbing cover, length: 1,000 mm, DN 280

### Application examples

Showroom, Restaurant, Theatre, Production site, Industrial building

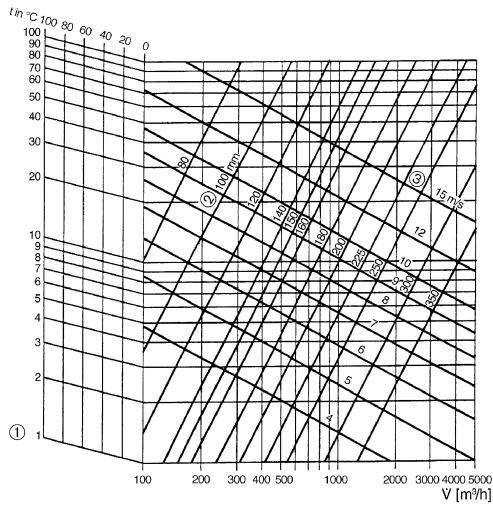
Article number 0092.0318

### Technical data

Model	25 mm sound absorbing cover
Material	Aluminium
Weight	3,6 kg
Weight including packaging	4,85 kg
Nominal size	280 mm
Width	362,5 mm
Height	362,5 mm
Depth	1.170 mm
Width with packaging	380 mm
Height with packaging	380 mm
Depth with packaging	1.195 mm
Insertion loss at 63 Hz	1 dB
Insertion loss at 125 Hz	2 dB
Insertion loss at 250 Hz	4 dB
Insertion loss at 500 Hz	9 dB
Insertion loss at 1 kHz	18 dB
Insertion loss at 2 kHz	19 dB
Insertion loss at 4 kHz	9 dB
Insertion loss at 8 kHz	9 dB
Total insertion loss	
Insertion loss note	
Sound insulation	Yes
Packing unit	1 piece
Range	C
GTIN (EAN)	4012799923183

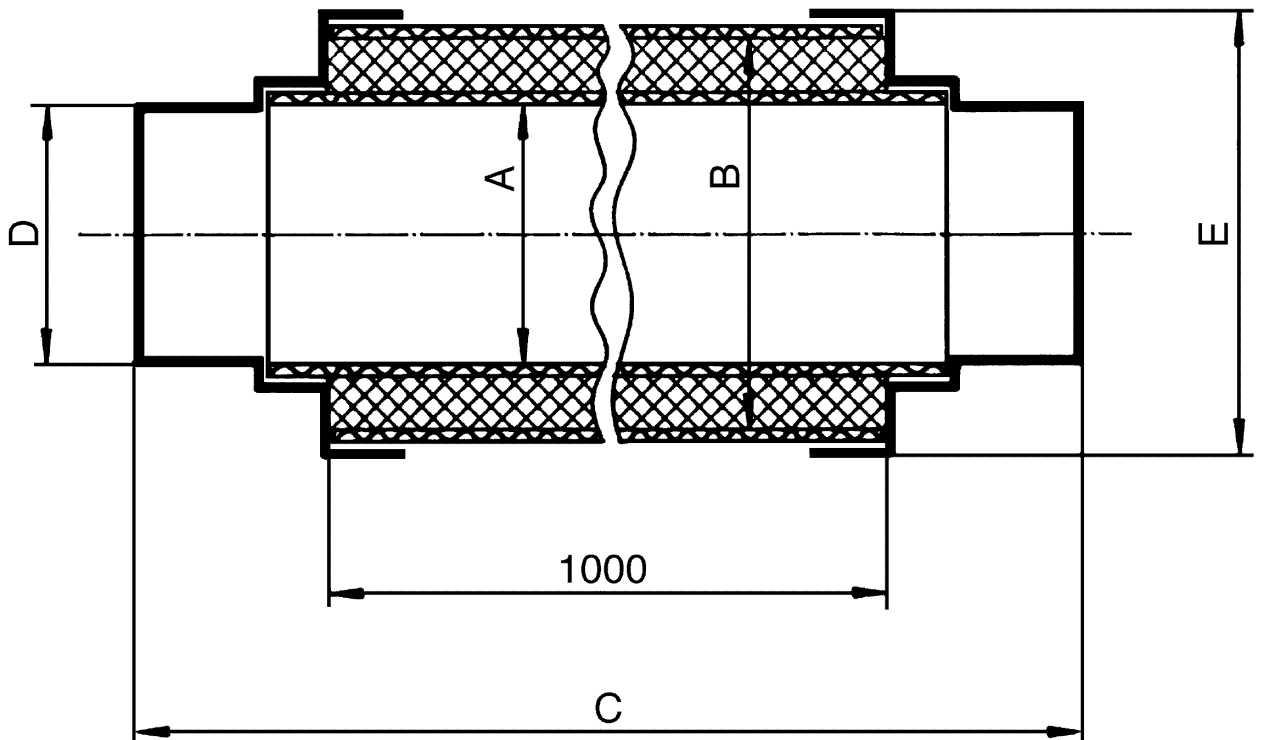
# RSR 28

## Characteristic curve Pressure losses



- ① Pressure loss in Pa/m sound absorber
- ② Duct diameter
- ③ Velocity of flow

## Dimensioned drawing [mm]





# RSR 28

A	B	C	D	E
280	355	1.170	279,5	362,5