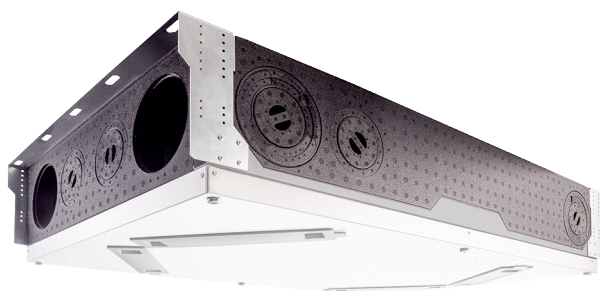


WS 120 Trio LRV



Short description

Compact and quiet centralised ventilation unit with longitudinal flow, exhaust air to the right, with effective heat and humidity recovery, EC fans with constant volumetric flow regulation, connection of a channel system, 40-120 m³/h, frost protection through integrated preheating register

Application examples

Apartments, Terraced houses, Doctor's practice, Hotels, Retirement home

Article number 0095.0658

Technical data

Model	Longitudinal flow, exhaust air on the right, integrated preheating register
Air flow volume	40 m ³ /h - 120 m ³ /h
Rotating speed	2.200 1/min
SEC average	-36,82 kWh/(m ² *a)
Energy efficiency class	A
Type of voltage	Alternating current
Rated voltage	230 V
Frequency	50 Hz/60 Hz
SPI value in accordance with DIN EN 13141-7 (A7)	0,29 Wh/m ³
Power consumption in accordance with DIN EN 13141-7 (A7)	20 W
Stand-by power consumption	< 1 W
I _{max}	5 A
Degree of protection	IP 00
DIBT approval	Yes
Installation site	Wall / ceiling
System type	Centralised
Material	EPP plastic / galvanised sheet steel
Housing material	Plastic EPP
Heat exchanger material	Synthetic material
Colour	black / traffic white (RAL 9016)
Weight	25 kg
Weight including packaging	28 kg
Filter class	ISO ePM10 ≥ 50 % (M5) / ISO ePM1 ≥ 60 % (F7)
Connection diameter	125 mm (outside air/outgoing air/supply air/exhaust air), 75 mm (supply air/exhaust air)
Width	600 mm
Height	210 mm
Depth	1.000 mm

WS 120 Trio LRV

Width with packaging	720 mm
Height with packaging	300 mm
Depth with packaging	1.120 mm
Airstream temperature at I _{Max}	-20 °C up to 50 °C
Max. degree of heat provision in accordance with DIN EN 13141-7 (A7)	81 %
Heat exchanger construction type	Enthalpy cross-counterflow
Humidity recovery with enthalpy heat exchanger in accordance with DIN EN 13141-7 (A2)	69 %
Position – exhaust air	right
Bypass	No
Frost protection	integrated
Enthalpy heat exchanger	Yes
Antifreeze circuit	Yes
Summer circuit	ECO exhaust air / ECO supply air
Filter monitoring	with time control
Humidity control	integrated
CO ₂ regulation (optional)	Trio CO ₂ E, Trio CO ₂ I
Air quality control (optional)	Trio VOC E, Trio VOC I
KNX connection (optional)	K-SM
MODBUS interface	integrated
Control unit included in scope of delivery.	RLS 1 WR, App
Control unit (optional)	RLS T2 WS, RLS G1 WS
EnOcean wireless integration (optional)	E-SM
Mobile control	Yes
Housing emission sound pressure level	32 dB (Spacing 1m, sound absorption 10 m ²)
Approval number	Z-51.3-518
Packing unit	1 piece
Range	K
GTIN (EAN)	4012799956587

Sound power level in octave range

	63 Hz	125 Hz	250 Hz	500 Hz	1 kHz	2 kHz	4 kHz	8 kHz	Total
L_{WA2} (dB(A))	21	29	28	34	36	33	24	16	40
L_{WA5} (dB(A))	15	30	33	30	28	23	15	13	37
L_{WA6} (dB(A))	14	31	33	29	32	27	17	13	38

L_{WA2}= housing sound power level in dB.

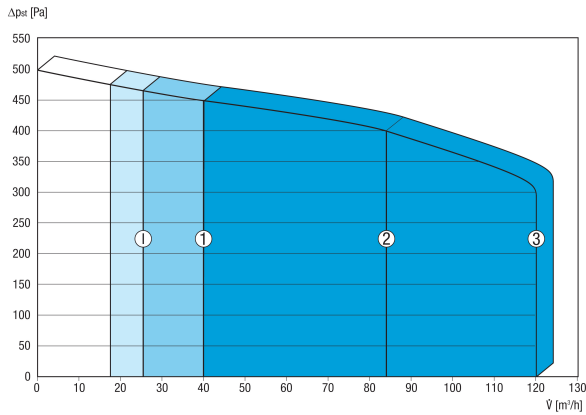
L_{WA5}= free inlet sound power level in dB.

L_{WA6}= free outlet sound power level in dB.

Operating point: Air volume 84 m³/h and external pressure 50 Pa

WS 120 Trio LRV

Characteristic curve



The figures shown indicate the pre-set ventilation levels (“factory settings”).

1 = 40 m³/h, reduced ventilation (RV)

2 = 84 m³/h, nominal ventilation (NV)

3 = 120 m³/h, intensive ventilation (IV)

I = Interval or “humidity protection operation” depending on RV

Individual settings available:

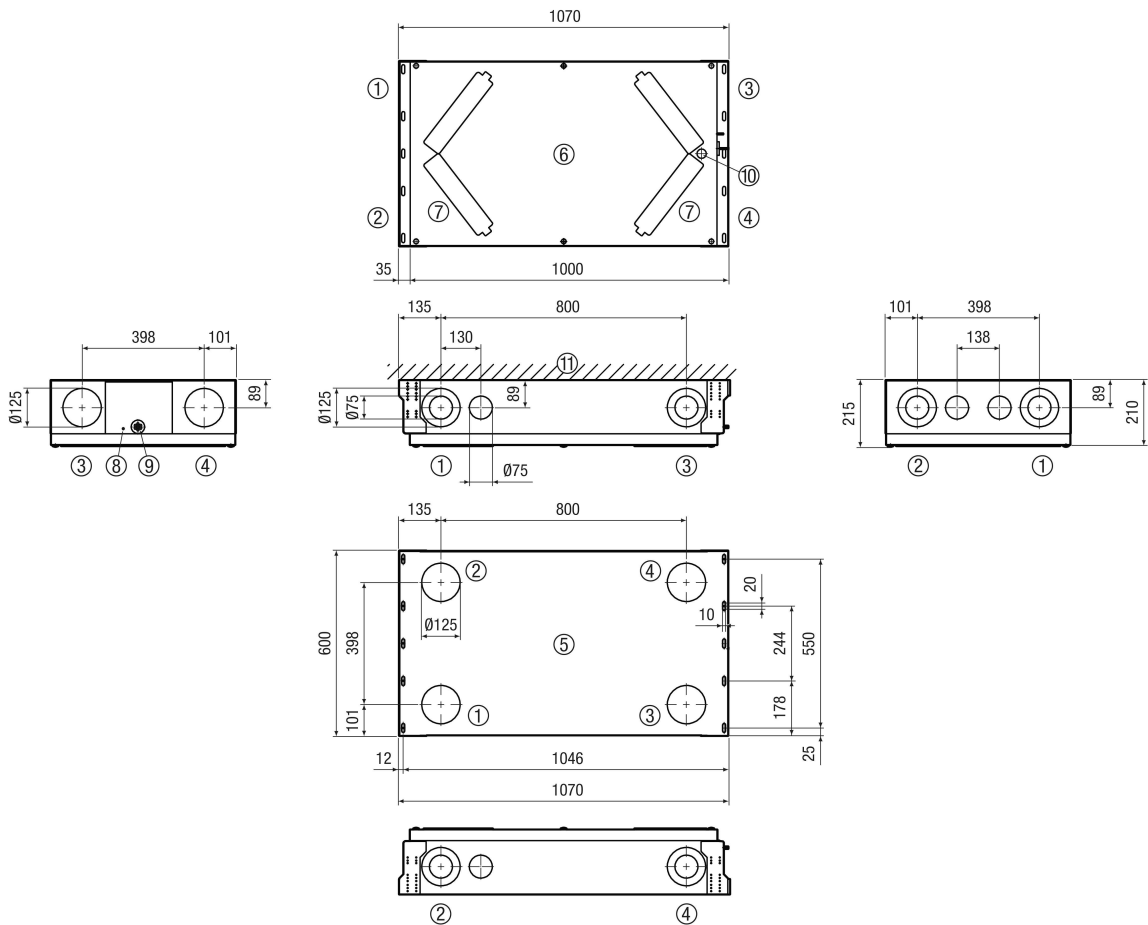
RV = 40 m³/h - 120 m³/h

NV = 40 m³/h - 120 m³/h

IV = 40 m³/h - 120 m³/h

Essential condition: RV < NV < IV !

Dimensioned drawing [mm]



- ① Supply air
- ② Exhaust air
- ③ Outgoing air
- ④ Outside air
- ⑤ View from above

WS 120 Trio LRV

- ⑥ View from below
- ⑦ Filter covers
- ⑧ Mains connection
- ⑨ Connection cable for control panel
- ⑩ USB
- ⑪ Ceiling / wall