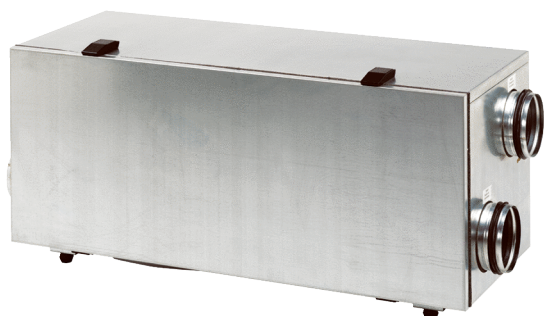


WS 150 L



Short description

Centralised ventilation unit with very effective heat recovery through cross-counterflow exchanger, EC motors with constant volumetric flow regulation, supply and exhaust air on the left, 4 x DN 125, DIBT approval, 70 - 165 m³/h, KNX connection possible

Application examples

Apartment, Low-energy house, Single-family house, Passive energy house

Article number 0095.0058

Technical data

Model	Connections on the left
Number of ventilation levels	3
Air flow volume	70 m³/h - 165 m³/h
Volumetric flow constant	yes
Speed controllable	–
SEC average	-38,4 kWh/(m²*a)
Energy efficiency class	A
Type of voltage	Alternating current
Rated voltage	230 V
Frequency	50 Hz/60 Hz
SPI value in accordance with DIN EN 13141-7 (A7)	0,23 Wh/m³
Power consumption	24 W - 51 W (At 100 Pa counter pressure)
Power consumption in accordance with DIN EN 13141-7 (A7)	27 W
Stand-by power consumption	< 2 W
I _{max}	0,5 A
Degree of protection	IP 00
DIBT approval	yes
PHI certification	No
Installation site	Cellar / Storage tank / Jamb wall / Utility room / Heating room
System type	Centralised
Housing material	Sheet steel, galvanised
Heat exchanger material	Aluminium
Colour	Light grey
Weight	51 kg
Weight including packaging	61 kg
Filter class	G4
Connection diameter	125 mm
Connection diameter of condensation drain	3/4" external thread for connection to a 1/2" hose
Width	1.065 mm

WS 150 L

Height	460 mm
Depth	400 mm
Width with packaging	1.090 mm
Height with packaging	600 mm
Depth with packaging	430 mm
Ambient temperature	40 °C
Max. degree of heat provision in accordance with DIN EN 13141-7 (A7)	90 %
Heat exchanger construction type	Cross-counterflow
Bypass	No
Frost protection	External
Enthalpy heat exchanger	No
Antifreeze circuit	yes
Summer circuit	No
Filter monitoring	time controlled with RLS 2 F
Humidity control	optional with HY 5, HY 5 I, HY 10 AP, HY 10 UP
CO ₂ regulation	-
Air quality control (optional)	EAQ 10/1
KNX connection (optional)	to be supplied by the customer
MODBUS interface	No
Control unit included in scope of delivery.	No
Control unit (optional)	RLS 2 F, RLS 3
Wireless switch on/off (optional)	XE 1, XS 1
EnOcean wireless integration (optional)	No
Mobile control	No
Housing emission sound pressure level	31 dB(A) (Spacing 1m, sound absorption 10 m ²)
Approval number	Z-51.3-172
Packing unit	1 piece
Range	K
GTIN (EAN)	4012799950585

Sound power level in octave range

	63 Hz	125 Hz	250 Hz	500 Hz	1 kHz	2 kHz	4 kHz	8 kHz	Total
L_{WA2}, Level 2 (dB(A))	26	28	26	28	22	19	9	5	33
L_{WA5}, Level 2 (dB(A))	18	24	22	28	28	21	11	5	33
L_{WA6}, Level 2 (dB(A))	19	22	24	28	28	25	10	5	33

L_{WA2}= housing sound power level in dB.

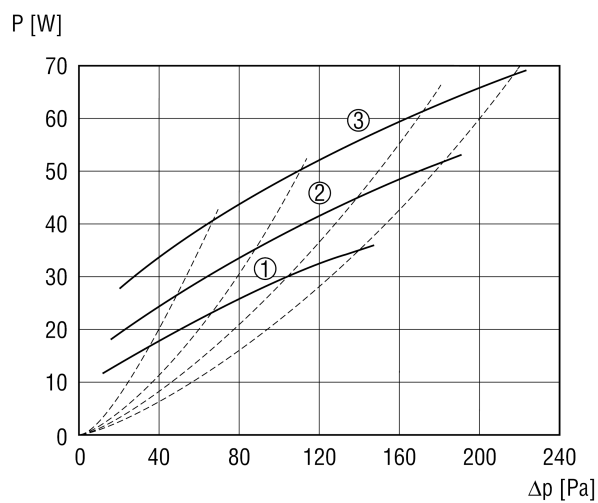
L_{WA5}= free inlet sound power level in dB.

L_{WA6}= free outlet sound power level in dB.

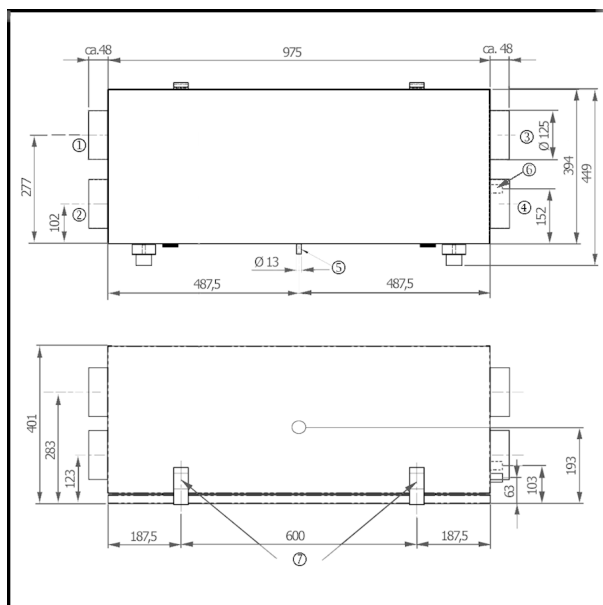
L_{WA5}, L_{WA6} = sound power level emitted to the free surroundings. L_{WA5} Exhaust air connections, L_{WA6} Supply air connections.

WS 150 L

Characteristic curve



Dimensioned drawing [mm]



- ① Exhaust air
- ② Supply air
- ③ Outside air
- ④ Outgoing air
- ⑤ Condensation drain
- ⑥ Electrical connections
- ⑦ Seal