

geniovent.x 900 H D-G-K2



Short description

Decentralised RLT air handling unit with very good heat recovery. With cross-counterflow heat exchanger and pre-heating register, upwards outside and outgoing air connections, exhaust air via rectangular duct, supply air on unit, supply air side and electrical side covered with panels. CO2 sensor integrated in unit. With app for mobile unit control system

Application examples

Classroom, Day-care centre, Office, Doctor's practice, Shops

Article number 0041.0234

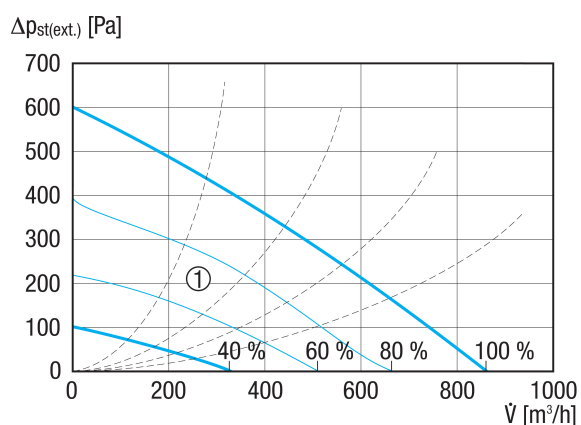
Technical data

| | |
|---|--|
| Model | D=Outside air and outgoing air connections upwards to the ceiling / G = Counterflow heat exchanger / K2=combined solution: Exhaust air via rectangular duct, supply air via grille |
| Air flow volume | 250 m ³ /h / 870 m ³ /h |
| SFP value | 0,2 W/(m ³ /h) |
| Type of voltage | Alternating current |
| Rated voltage | 230 V |
| Nominal output | 122 W |
| Stand-by power consumption | < 1 W |
| I _{max} | 15 A |
| Degree of protection | IP 40 |
| Installation site | Inside |
| Material | Sheet steel, galvanised |
| Housing material | Sheet steel, galvanised |
| Heat exchanger material | Synthetic material |
| Inner coating material | PUR foam with closed-cell surface |
| Colour | Pure white, similar to RAL 9010 |
| Weight | 210 kg |
| Weight including packaging | 260 kg |
| Filter class | ISO ePM1 50-65% (F7) / ISO ePM10 60% (M5) |
| Connection diameter | 315 mm |
| Connection diameter of condensation drain | 7 mm (inside), 10 mm (outside) |
| Width | 1.984 mm |
| Height | 473 mm |
| Depth | 880 mm |
| Width with packaging | 2.070 mm |
| Height with packaging | 950 mm |
| Depth with packaging | 1.020 mm |
| Airstream temperature at I _{Max} | -15 °C up to 60 °C |

geniovent.x 900 H D-G-K2

| | |
|--|----------------------------|
| Ambient temperature | 10 °C up to 40 °C |
| Max. degree of heat provision in accordance with DIN EN 13141-7 (A7) | 91 % |
| Heat exchanger construction type | Counter current |
| Bypass | Yes |
| Frost protection | integrated 1.5 kW |
| Enthalpy heat exchanger | No |
| Antifreeze circuit | Yes |
| Filter monitoring | with time control |
| CO ₂ regulation (optional) | integrated |
| Air quality control (optional) | VOC sensor for geniovent.x |
| Outside air shutters, automatic closing | integrated |
| KNX connection (optional) | K-SM |
| MODBUS interface | integrated |
| BACnet interface | integrated |
| Ethernet interface | integrated |
| Control unit included in scope of delivery. | RB-ZF4 |
| Control unit (optional) | RLS T1 SYS |
| EnOcean wireless integration (optional) | E-SM |
| Sound pressure level | 35 dB(A) |
| Packing unit | 1 piece |
| Range | X |
| GTIN (EAN) | 4012799412342 |

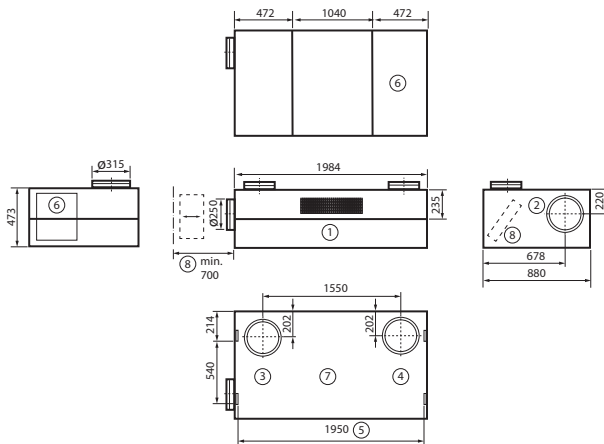
Characteristic curve



① Configuration range

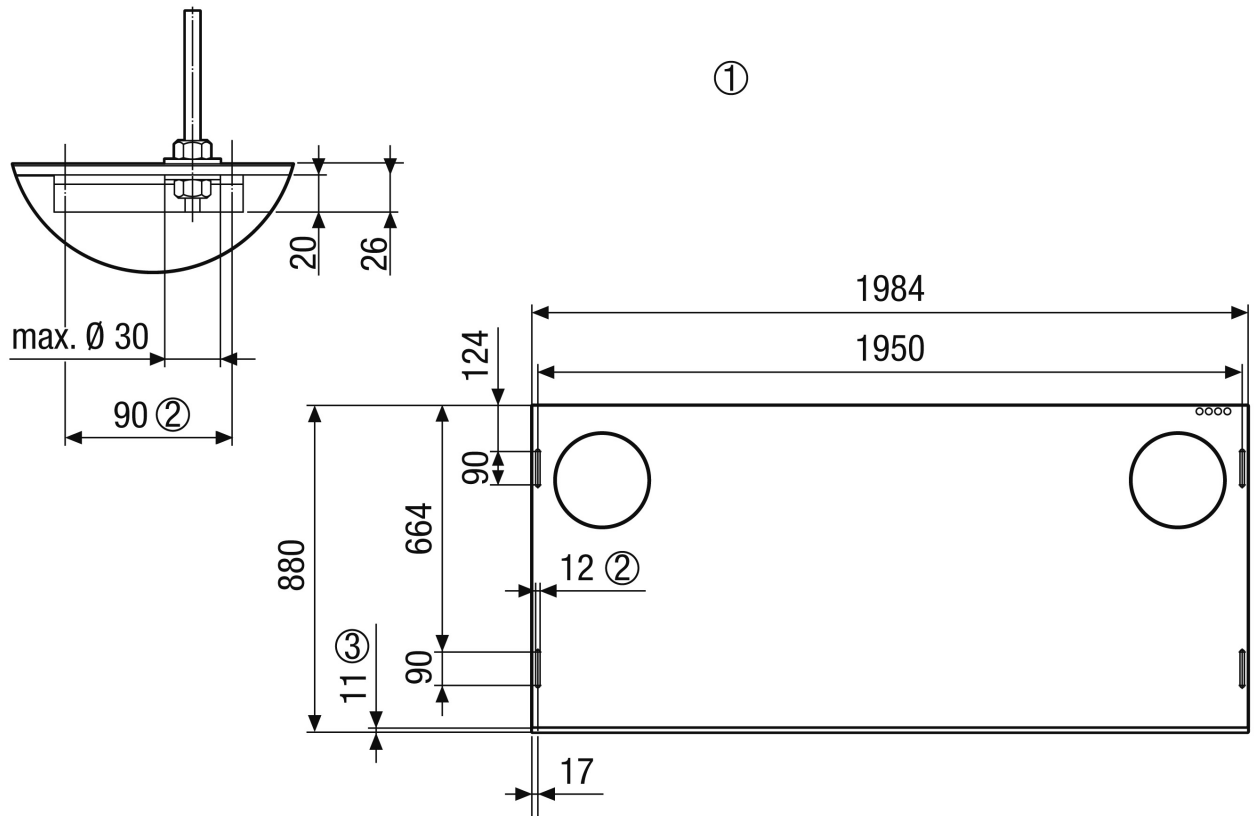
geniovent.x 900 H D-G-K2

Dimensioned drawing [mm]



- ① Supply air
- ② Exhaust air
- ③ Outside air
- ④ Outgoing air
- ⑤ Ceiling mounting
- ⑥ Access to electrical area
- ⑦ View from above
- ⑧ Access for filter change (maintain a distance of at least 700 mm from the wall)
- ⑨

Dimensioned drawing [mm]



- ① Ceiling mounting geniovent.x 900 HD. View of the unit from the ceiling
- ② Slotted hole, intended for ceiling mounting, e.g. using M10 threaded rod
- ③ Panels

geniovent.x 900 H D-G-K2

