

ER EC

Layout example for decentralised air extraction in accordance with DIN 18017-3

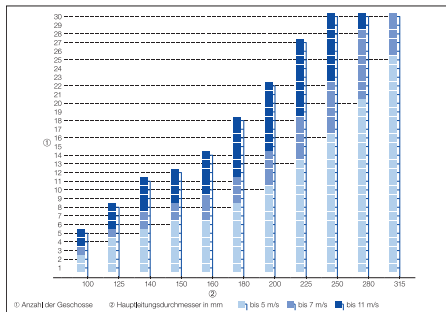
Assumption:

- Fans with 60 m³/h in the connecting duct.
- 2 fans per complete floor.
- Building with 11 floors.

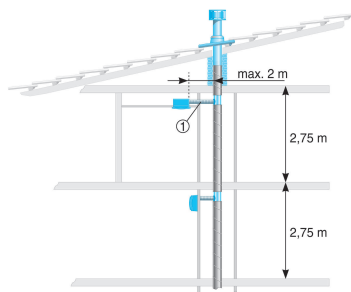
Procedure:

- On the diagram (for 2 fans per floor each with 60 m³/h), read the "11 floors" Y-axis - the associated main duct must have a diameter of 225 mm.

ER 60, one unit per complete floor*

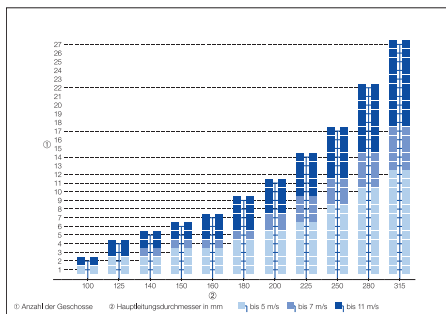


- ① Number of floors
- ② Main duct diameter in mm



- ① a maximum of 2 elbows

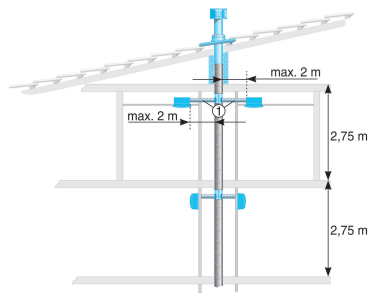
ER 60, two units per complete floor*



- ① Number of floors
- ② Main duct diameter in mm

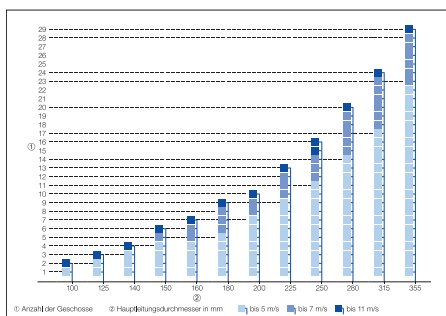
PLANNING INSTRUCTIONS

ER EC

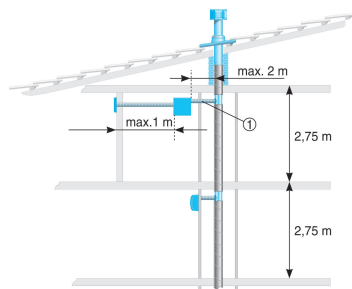


- ① a maximum of 2 elbows

ER 100, one unit per complete floor*

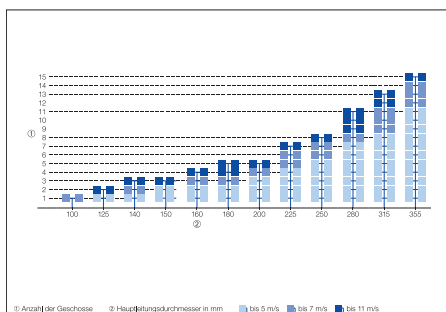


- ① Number of floors
- ② Main duct diameter in mm



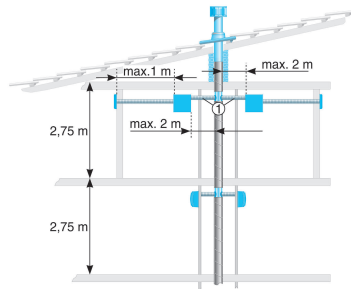
- ① a maximum of 2 elbows

ER 100, two units per complete floor*



- ① Number of floors
- ② Main duct diameter in mm

ER EC



① a maximum of 2 elbows

*Configuration with a coincidence factor of 100 %.

Please note:

- The selection diagrams above do not apply to the Centro centralised ventilation system. Please note separate planning instructions.
- In the event of more stringent acoustic requirements, note flow velocities.