

Serviceanleitung / Service instructions / Notice de montage

ECA 100 ipro Leiterplatten
 ECA 100 ipro Circuit boards
 Cartes de circuits imprimé ECA 100 ipro

ECA 100 ipro, EC A100 ipro K:
 Artikel-Nr. / Article number / Numéro d'article
 E101.1404.000x PL ABDE ECA 100 ipro
 x = aktuelle Version / current version / version actuelle



ECA 100 ipro VZC, ECA 100 ipro KVZC:
 Artikel-Nr. / Article number / Numéro d'article
 E101.1406.000x PL ABDE ECA 100 ipro
 x = aktuelle Version / current version / version actuelle



ECA 100 ipro H/KH, ECA 100 ipro B/KB:
 Artikel-Nr. / Article number / Numéro d'article
 E101.1405.000x PL ABDE ECA 100 ipro H/B
 x = aktuelle Version / current version / version actuelle



ECA 100 ipro F/KF:
 Artikel-Nr. / Article number / Numéro d'article
 E101.1405.010x PL SE ABDE ECA 100 ipro F
 x = aktuelle Version / current version / version actuelle



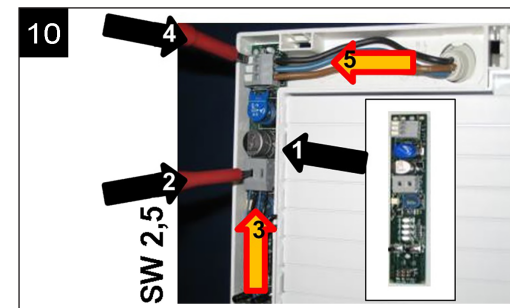
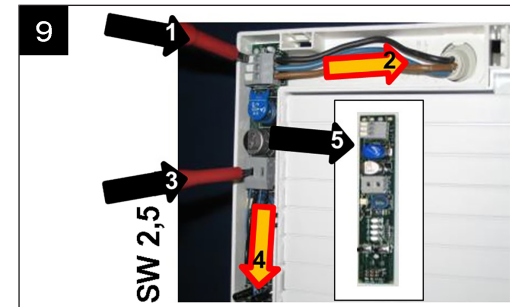
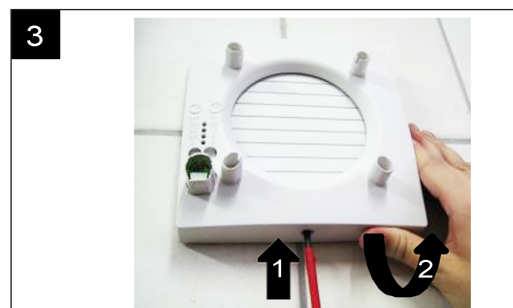
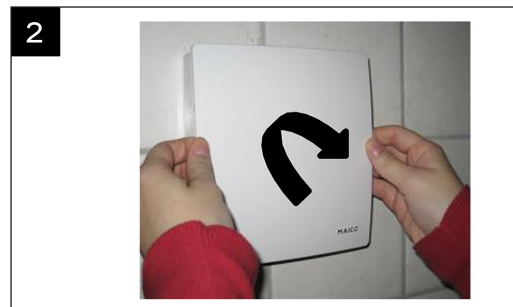
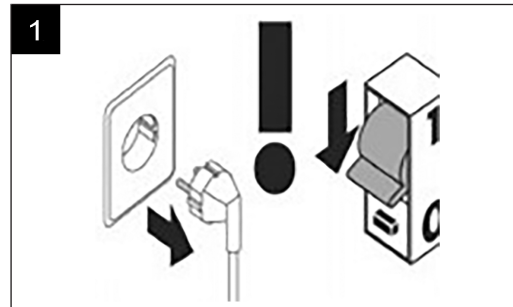
Montage nur durch Elektrofachkräfte gemäß den Sicherheitshinweisen der Montage- und Betriebsanleitung ECA 100 ipro.

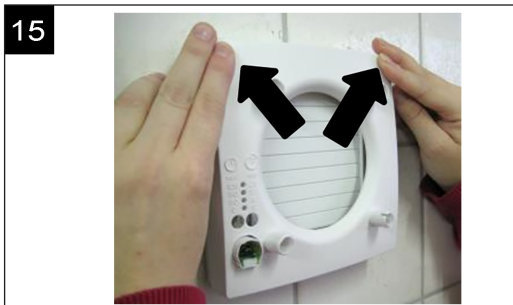
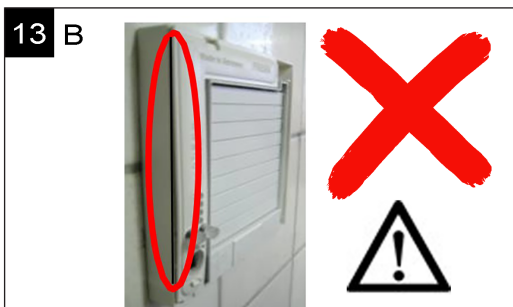
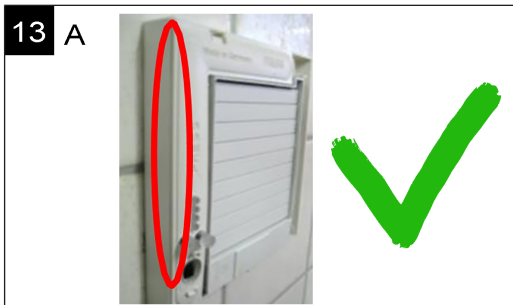


Assembly only by qualified electricians in accordance with the safety instructions in the installation and operating instructions ECA 100 ipro.

Montage uniquement par des électriciens qualifiés aux consignes de sécurité de la notice de montage et mode d'emploi ECA100 ipro.

Montage / Assembly





Impressum / Acknowledgements / Mentions légales

© Maico Elektroapparate-Fabrik GmbH. Deutsche Original-Betriebsanleitung. Druckfehler, Irrtümer und technische Änderungen vorbehalten.

© Maico Elektroapparate-Fabrik GmbH. Translation of the original operating instructions. Misprints, errors and technical changes are reserved.

© Maico Elektroapparate-Fabrik GmbH. Traduction de la notice originale. Sous réserve de fautes d'impression, d'erreurs et de modifications techniques.