



**THE FIRST PUSH-PULL UNIT WITH CENTRIFUGAL FAN.
TOP-PERFORMING. QUIET. CONSTANT.**

CENTRIFUGAL PUSH-PULL CPP 60

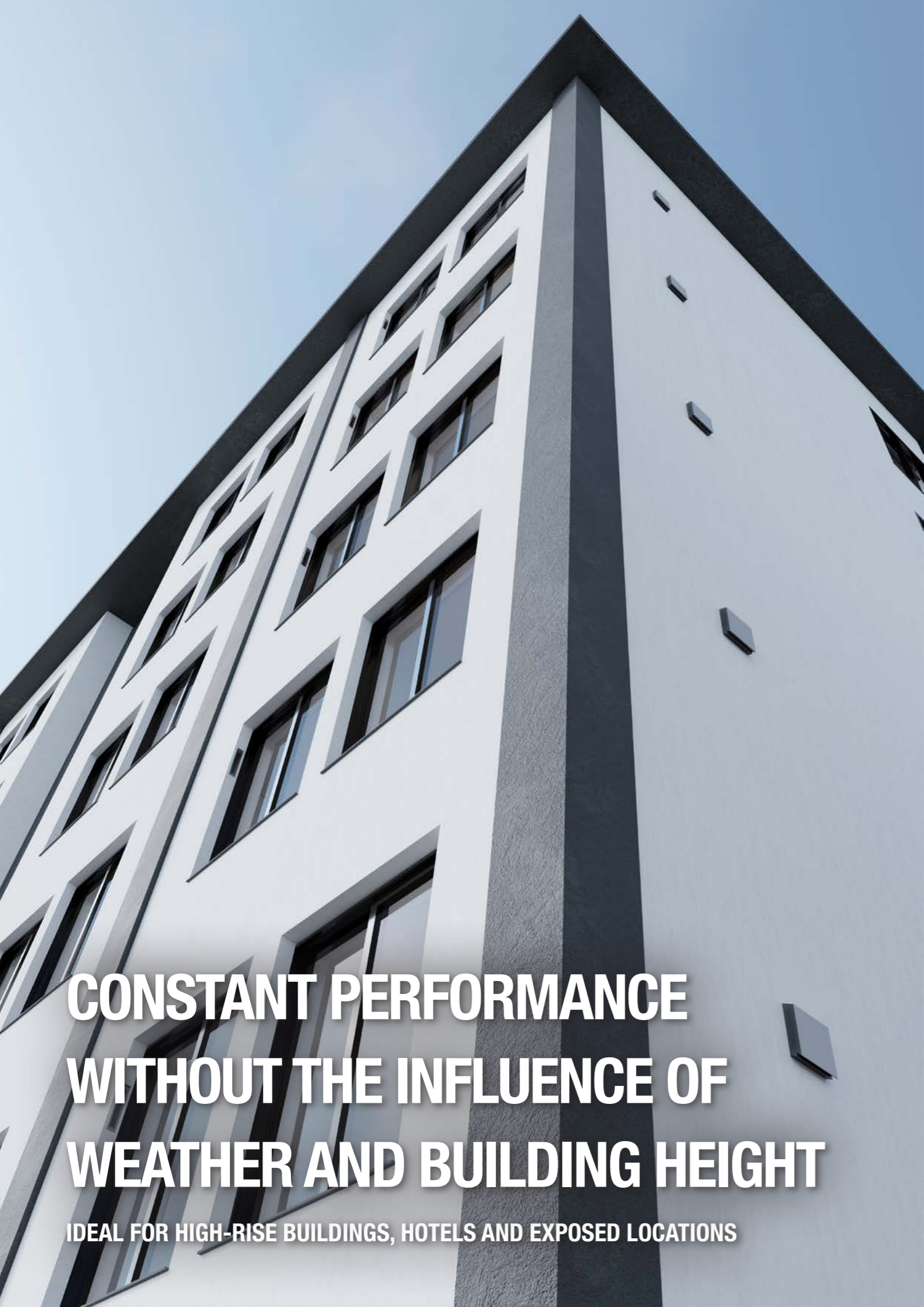
- ▶ Constant volumetric flow and high pressure stability
- ▶ No switching noise, therefore pleasantly quiet
- ▶ Simple installation (core drill hole 140 mm)
- ▶ Surface-mounted and flush-mounted version
- ▶ Heat recovery > 84 %, even with high wind loads



CPP 60

Plug & Play

**for new builds and renovations
for tall buildings**



CONSTANT PERFORMANCE WITHOUT THE INFLUENCE OF WEATHER AND BUILDING HEIGHT

IDEAL FOR HIGH-RISE BUILDINGS, HOTELS AND EXPOSED LOCATIONS

CENTRIFUGAL PUSH-PULL **CPP 60** INNOVATIVE CPP 60 SINGLE-ROOM VENTILATION UNIT WITH HEAT RECOVERY AND HIGH PRESSURE STABILITY

MAICO presents the **CPP 60**, the first push-pull unit with an integrated centrifugal fan. This fan delivers an impressive **volumetric flow** of up to **60 m³/h** per unit.

Thanks to the centrifugal fan with constant volumetric flow, the performance and efficiency of the **CPP 60** remain constant regardless of the weather conditions or installation location. The airflow direction is reversed by means of an innovative flap solution, which means that the **CPP 60** works in whisper-quiet operation and the switching noise of a conventional push-pull unit is eliminated.

The **CPP 60** is suitable for new builds as well as for renovation thanks to its simple assembly and installation. The **CPP 60** with a surface-mounted version offers a particularly simple solution, especially for renovations.

The ceramic cylinder of the **CPP 60** enables **heat recovery** of **over 84 %**, which ensures the energy efficiency of the construction project and leads to reduced heating costs.

Thanks to **high volumetric flow and consistency**, two **CPP 60** units can often achieve what would require several conventional push-pull units.



TABLE OF CONTENTS

INNOVATIVE MODE OF OPERATION	4
IDEAL FOR NEW BUILDS AND RENOVATIONS	5
VENTILATION CONCEPT AND COMPATIBILITY WITH OTHER VENTILATION SYSTEMS	6
FINAL INSTALLATION KIT FOR SURFACE-MOUNTING	8
PRE-INSTALLATION KIT FOR FLUSH-MOUNTING	9
WEATHER CONDITIONS AND INSTALLATION LOCATION	10
EXTERNAL COVERS	11
COMPONENTS AND ACCESSORIES	12
TECHNICAL DATA	14



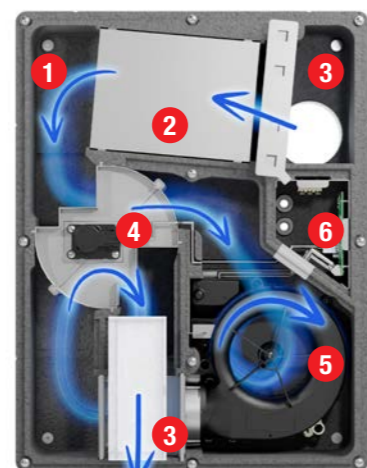
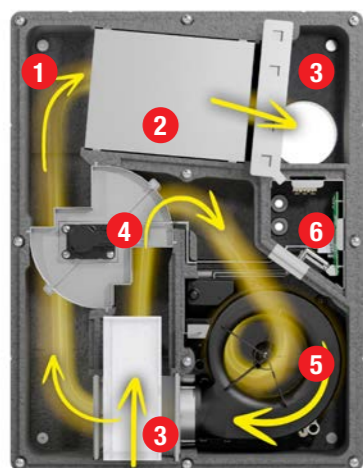
CENTRIFUGAL INSTEAD OF AXIAL – THE DECISIVE DIFFERENCE

Consistent performance where others reach their limits

The switchover flap in the CPP 60 ensures continuous operation of the fan.
The EPP housing and the airflow routing in the housing ensure a naturally high standard sound level difference.

The CPP 60 is the first push-pull unit with a built-in centrifugal fan. Thanks to the use of a centrifugal fan, the unit is not sensitive to pressure fluctuations. Even with very high wind loads on the façade, the unit delivers a constant volumetric flow at all ventilation levels. This makes the unit ideal for installation in multi-storey blocks of flats and windy coastal regions. The innovative switchover flap, in combination with a sophisticated chamber system, ensures a ventilation and air extraction function with continuous operation of the centrifugal fan. In push-pull operation, the change from the exhaust air phase to the supply air phase takes place quietly and unobtrusively in a cyclical cycle. The annoying noise of other push-pull units moving up and down is completely eliminated with the CPP 60.

The EPP housing and the airflow routing in the housing ensure a naturally high standard sound level difference. In addition to its extremely quiet operation, the CPP 60 can also deliver a constant volumetric flow of up to 60 m³/h in heat recovery mode. This means that even larger rooms are guaranteed to be ventilated with a ventilation pair in accordance with DIN 1946-6.



- 1 EPP housing
- 2 Heat storage tank
- 3 Filter (internal & external filter)
- 4 Switchover flap
- 5 Centrifugal fan
- 6 Electronics
- Supply air
- Exhaust air

FOR NEW BUILDS AND RENOVATIONS

QUICK AND EASY INSTALLATION THANKS TO PLUG & PLAY

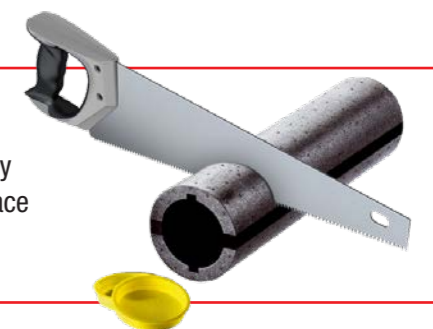
The CPP 60 impresses with its particularly **installation-friendly design**, which offers maximum flexibility on the construction site. Whether surface-mounted or flush-mounted variant, a core drill hole of 140 mm is sufficient when using the MAICO wall sleeve – alternatively, a core drill hole of only 95 mm is sufficient when using a standard HT pipe. The wall thickness is irrelevant, which considerably simplifies use in both new builds and renovations.

The surface-mounted version is ideal for modernisation projects and enables quick, clean retrofitting, while the flush-mounted kit accessories allow discreet and unobtrusive integration into sophisticated room concepts – without compromising on performance or convenience.



ENORMOUSLY FLEXIBLE

The thermally insulated wall sleeve (W 90) of the CPP 60 can be individually shortened from 500 mm to any desired length. This means that special space requirements can be flexibly accommodated.



VENTILATION CONCEPT WITH CPP 60

MODE OF OPERATION

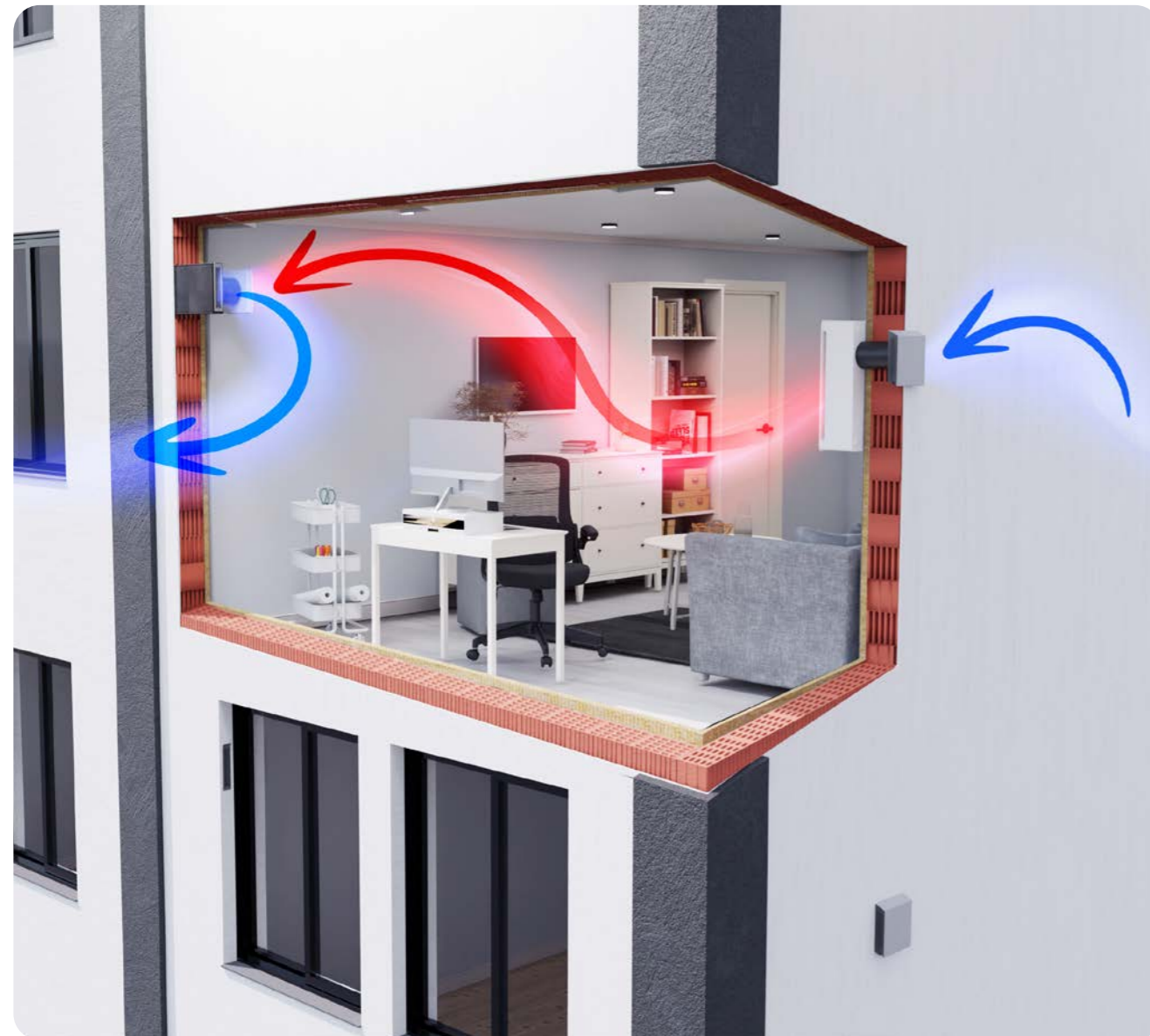
- ▶ Wall-mounted unit with alternating exhaust air and supply air mode for ventilating living spaces
- ▶ Storage of up to 84.7 % of the heat in exhaust air mode, heat recovery in supply air mode
- ▶ Humid rooms and kitchens can be integrated into the ventilation system with exhaust air fans or PPB 30 K
- ▶ Central control with RLS 45 K control panel with various ventilation modes
- ▶ ISO Coarse 30 % (G2) & 1 x ISO Coarse 45 % (G3) Filter

UNIT FUNCTIONS

- ▶ 5 ventilation levels with flow rates 20 m³/h | 30 m³/h | 42 m³/h | 50 m³/h | 60 m³/h
- ▶ Intermittent ventilation at level 5 with or without heat recovery for a limited time
- ▶ Time-limited switch-off in sleep mode
- ▶ 3 operating programmes, can be set individually:
 - Ventilation system with heat recovery
 - Cross-ventilation, without heat recovery for an unlimited period of time
 - Automatic operation, e.g. with humidity sensor

REQUIRED ACCESSORIES:

- ▶ thermally insulated W 90 wall sleeve
- ▶ external cover
- ▶ RLS 45 K room air control



↔ Supply air and exhaust air with change of direction

↔ Outside and outgoing air with change of direction

INTEGRATED VENTILATION SYSTEMS CAN BE CONVENIENTLY IMPLEMENTED BY CONNECTING SEVERAL UNITS VIA THE RLS 45 K CONTROL PANEL.



RLS 45 K control panel / comfort version

The CPP 60 units are controlled via a cable connection.

OPTIONS FOR CONNECTING UNITS

- ▶ Up to 8 CPP 60 possible on one RLS 45 K
- ▶ Further combinations and system setups with other push-pull units such as PP 45 and RV 2 possible
- ▶ Combination of CPP 60 with exhaust air units (ER, ECA) can be realised in bathroom, WC, kitchen

EXTENSION MODULES

- ▶ External sensors: Humidity sensor PP 45 HY | CO2 sensor PP 45 CO2 | Air quality sensor PP 45 VOC
- ▶ EnOcean module PP 45 EO

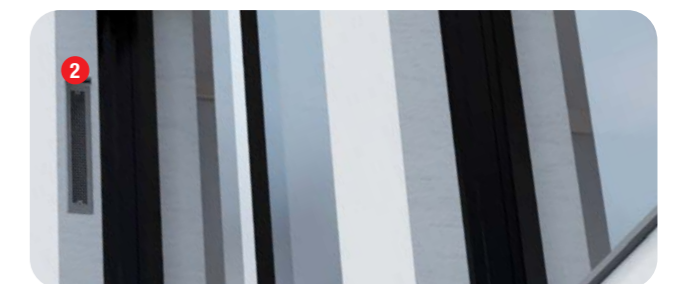
PLANNING TIP:

DIFFERENT VENTILATION SYSTEMS IN COMBINATION – MORE EFFICIENT, MORE ATTRACTIVE, SMARTER

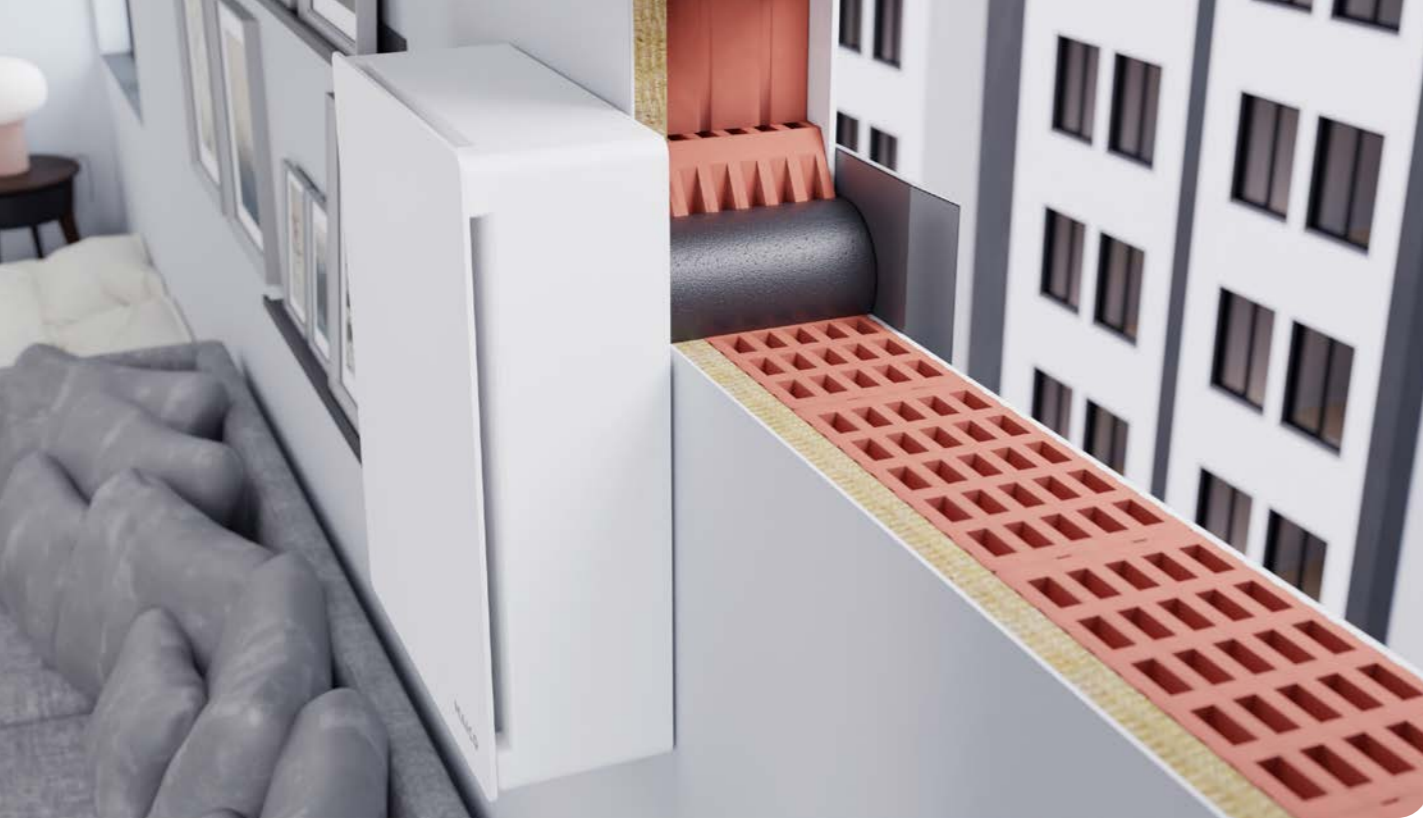
The possible combinations of the CPP 60 with PP 45 enable optimum adaptation to different conditions. For the exterior wall facing the inner courtyard, the CPP 60 with its high volumetric flow ensures efficient ventilation, while the PP 45 with the soffit element on the visible side facing the street offers a discreet, visually appealing solution. This means you benefit from high sound insulation values with maximum performance and an architecturally unobtrusive exterior design.



❶ CPP 60 with external cover PP 45 AE



❷ PP 45 with soffit element PP 45 LE

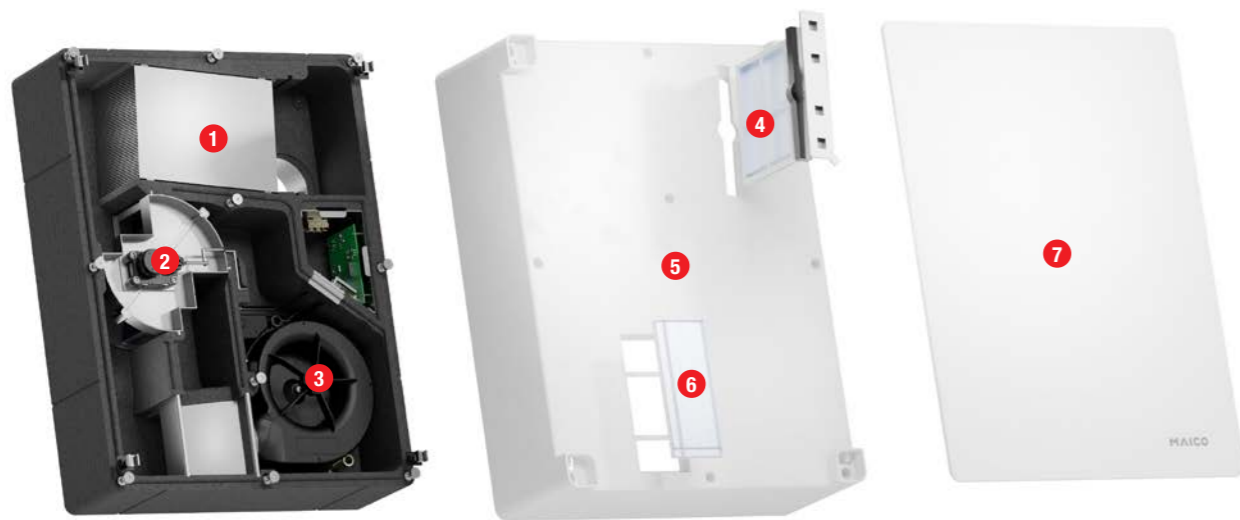


FINAL INSTALLATION KIT

The CPP 60 is a convincing innovation in ventilation technology. Craftsmen benefit from the simple surface installation and the comparatively small core hole drilling of 140 mm when using the thermally insulated MAICO W 90 wall sleeve.

CPP 60 FINAL INSTALLATION KIT

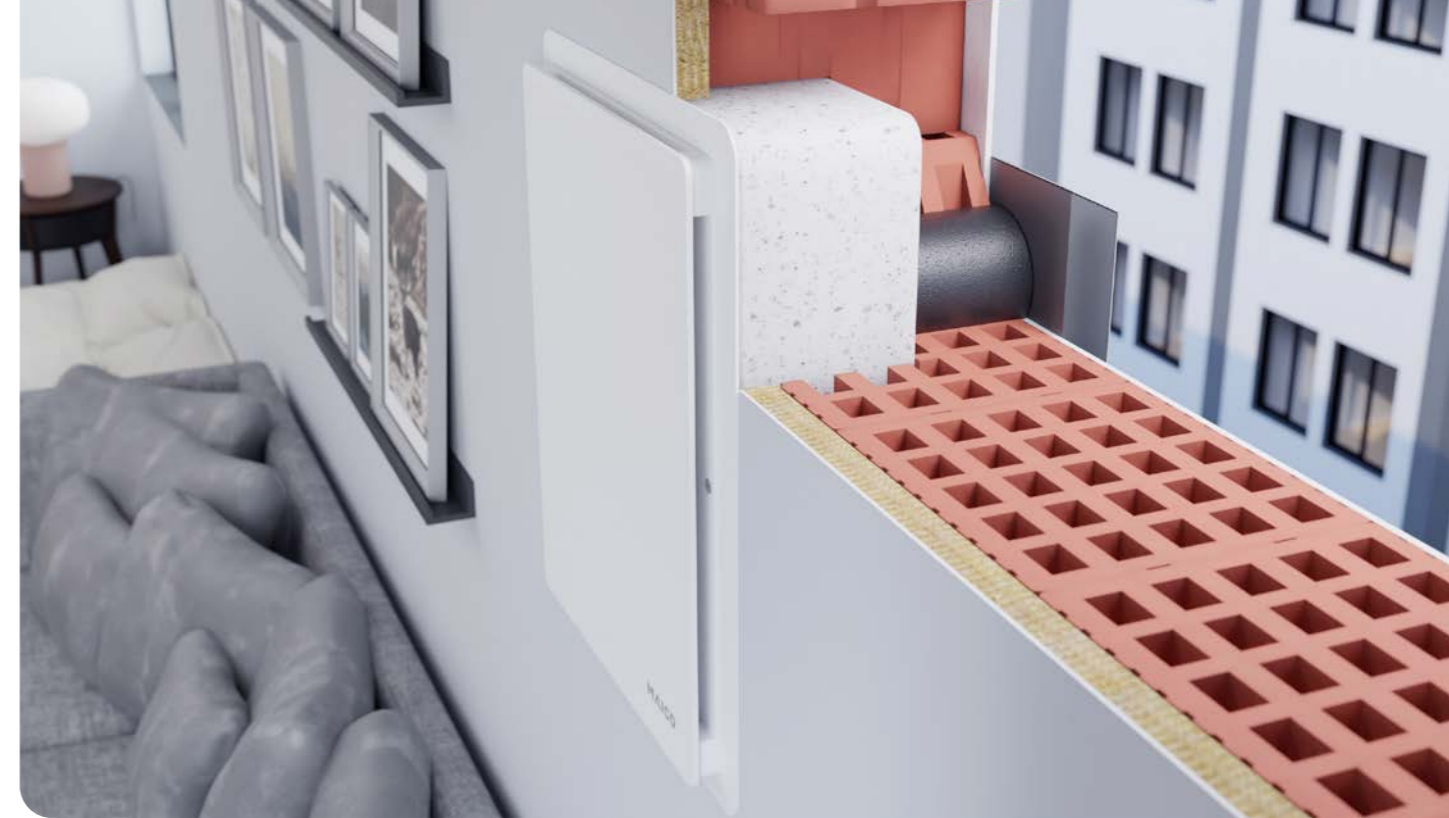
Art. no.: 0095.0667



- 1 Ceramic heat exchanger
- 2 Switchover flap
- 3 Centrifugal fan

- 4 Outside air filter (G3)
- 5 Upper part of the unit
- 6 Inside air filter (G2)

- 7 Front cover



FLUSH-MOUNTED PRE-INSTALLATION KIT

The flush-mounted pre-installation kit offers a discreet and space-saving installation option with all technical functions.

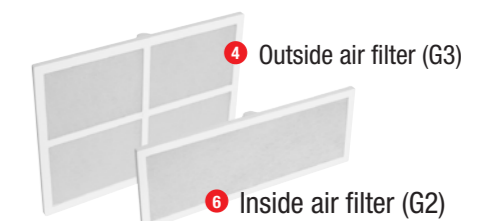
CPP 60 VSUP FLUSH-MOUNTED PRE-INSTALLATION KIT

Art. no.: 0093.1764



MAINTENANCE, CLEANING AND TOOL-FREE FILTER CHANGE

The CPP 60 ventilation unit can be completely removed for maintenance and cleaning work. Installation at an easily accessible height means that maintenance work or filter changes can be carried out effortlessly.



WEATHER CONDITIONS AND INSTALLATION LOCATION

STABLE PRESSURE AND CONSTANT VOLUMETRIC FLOW – EVEN IN WINDY CONDITIONS, WITH TEMPERATURE FLUCTUATIONS OR HIGH BUILDING HEIGHTS

Thanks to its **pressure stability** and **constant volumetric flow**, the performance and heat recovery of the **CPP 60** remains unchanged regardless of weather conditions or installation height.

Where conventional push-pull units have to contend with weather- and height-related pressure fluctuations, the **CPP 60** unit impresses when installed in high-rise buildings, hotels or similar buildings.



MAICO EXTERNAL COVERS FOR THE CPP 60

A CONDENSATION DRIP EDGE IS INTEGRATED INTO ALL EXTERNAL COVERS TO PREVENT SOILING OF THE FAÇADE.



External cover made of plastic **PP 45 AK**

- ▶ Colour: traffic white, similar to RAL 9016
- ▶ The grilles are flow-optimised to minimise air disturbances and the exhaust air is kept away from the exterior wall. This greatly minimises discolouration and dirt deposits on the external façade.

Art. no.: 0093.0176



External cover made of stainless steel (V4A) **PP 45 AE**

- ▶ The integrated air guides keep the exhaust air away from the exterior wall. This greatly minimises discolouration and dirt deposits on the external façade.
- ▶ The flow-optimised hood is also equipped with a sound insulation insert and is recommended for use in areas exposed to wind.

Art. no.: 0093.0177



External cover made of aluminium **PP 45 AW**

- ▶ Colour: white powder coated, similar to RAL 9010.
- ▶ The integrated air guides keep the exhaust air away from the exterior wall. This greatly minimises discolouration and dirt deposits on the external façade.
- ▶ The flow-optimised hood is also equipped with a sound insulation insert and is recommended for use in areas exposed to wind.

Art. no.: 0093.0178


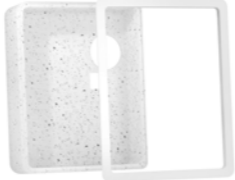







External cover made of aluminium **PP 45 AS**

- ▶ Colour: anthracite powder coated, similar to RAL 7016
- ▶ The integrated air guides keep the exhaust air away from the exterior wall. This greatly minimises discolouration and dirt deposits on the external façade
- ▶ The flow-optimised hood is also equipped with a sound insulation insert and is recommended for use in areas exposed to wind.

Art. no.: 0093.0612

COMPONENTS AND ACCESSORIES

COMPONENTS AND ACCESSORIES	ARTICLE NUMBER	PRODUCT PHOTOS
CPP 60 Final installation kit	0095.0667	
CPP 60 VSUP Flush-mounted pre-installation kit Optional for flush-mounted installation	0093.1764	
W 90 wall sleeve Ø 125 mm Thermally insulated, integrated condensate drain channels Length: 500 mm	0095.0668	
PP 45 AK External cover – plastic, traffic white	0093.0176	
PP 45 AE External cover – stainless steel, brushed	0093.0177	
PP 45 AW Aluminium, white powder-coated RAL 9010	0093.0178	
PP 45 AS External cover – aluminium, anthracite powder-coated RAL 7016	0093.0612	

COMPONENTS AND ACCESSORIES	ARTICLE NUMBER	PRODUCT PHOTOS
CPP 60 IC30 Air filter, replacement	0093.1765	
CPP 60 IC45 Air filter, replacement	0093.1766	
RLS 45 K Room air control	0157.0360	
PP 45 EO EnOcean module	0157.0362	
PP 45 LT Power unit	0157.0361	
PP 45 HYI Internal humidity sensor	0157.0364	
PP 45 HY Humidity sensor	0157.0365	
PP 45 CO2 CO ₂ sensor	0157.0366	
PP 45 VOC VOC sensor	0157.0367	



FIND YOUR LOCAL CONTACT PERSON

!



Maico Elektroapparate-Fabrik GmbH
Steinbeisstrasse 20
78056 Villingen-Schwenningen, Germany,
Service Centre tel.: +49 (0) 7720 / 694-0 | info@maico.de
www.maico-ventilatoren.com

